



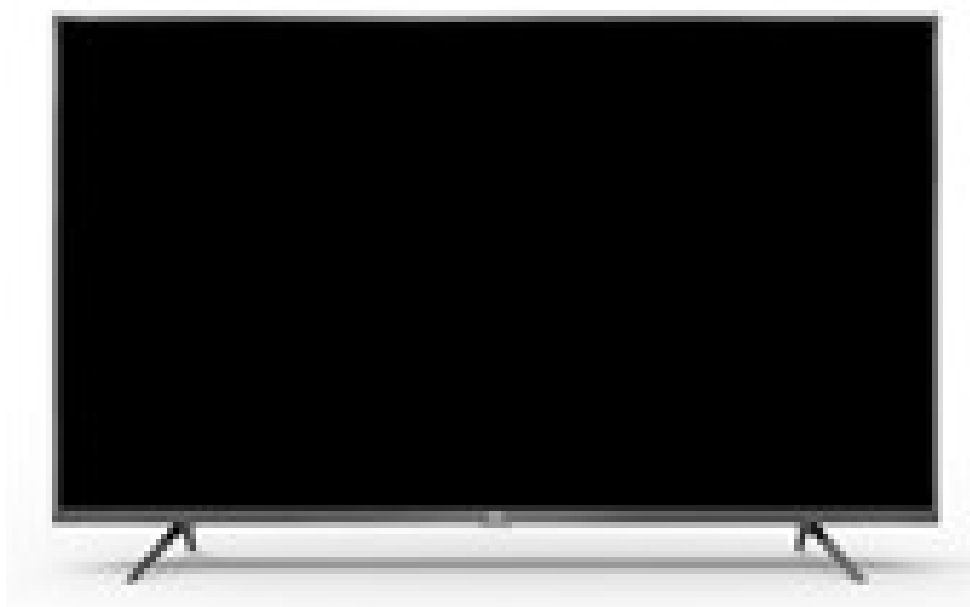
# 售后技术中心

Technical Support of After Sale Service

售后技术中心

---

## MI TV 43 inch After-sales Technical Manual V01



正面图

---

### MI TV 43 inch After-sales Technical Manual V01

- 1.Specification
- 2.Packing Parameter
- 3.DOA/DAP Inspection Criteria
  - 3.1 TV Core Union Inspection Criteria
    - 3.1.1 Inspection Tools
    - 3.1.2 Defects Definition
    - 3.1.3 Appearance Grade Definitions
    - 3.1.4 Unit& Abbreviation
    - 3.1.5 Appearance Inspection Standards

- 3.1.6 Function Detected Criteria
  - 3.1.7 Gap/Range Difference ( mm )
- 4 .7 Days No Reason to Return Products' Inspection& Acceptance Standards
  - 4.1Inspection Methods
  - 4.2 Defects Definition
  - 4.3 Appearances' Inspection Criteria
- 5. Function Test
  - 5.1 Elecronic Performance Test
    - 5.1.1 Start Up Test
    - 5.1.2 Power Off/Reset Test
  - 5.2 Signals Resources Test
  - 5.3 Network Setup
    - 5.3.1 Wireless Connection
    - 5.3.2 Wired Connection
  - 5.4 Display Parameter Adjustment
  - 5.5 Audio Out
  - 5.6 Online Film and TV Resources
  - 5.7 System Recovery
- 6. Online Upgrade
  - 6.1 Smart Update
  - 6.2 Manual Update
  - 6.3 U disk Update
- 7 .Data Clean ( Trio-Clean )
  - 7.1 Switch Off TV
  - 7.2 Activate Trio-Clean Interface by Remoter
  - 7.3 Reset System
- 8 . Get Beta test license
- 9 . Liquid Crystal Display Television' s Disassemble and Assemble instructions
  - 9.1 Tools preparation
  - 9.2 Dissemble
    - 9.2.1 Dissemble Pedestals
    - 9.2.2 Dissemble the back shell
    - 9.2.3 Dissemble the horn cover
    - 9.2.4 Dissemble the connect wire
    - 9.2.5 Dissemble the FFC wire
    - 9.2.6 Dissemble the MAIN Board
    - 9.2.7 Dissemble the wall bracket
    - 9.2.8 Dissemble the T-CON board
    - 9.2.9 Dissemble the wire & Wifi antenna
    - 9.2.10 Dissemble Accomplished
  - 9.3 TV Assemble
    - 9.3.1 Assemble Main Board
    - 9.3.2 Assemble Loudspeaker
    - 9.3.3 Connect wifi board

- 9.3.4 Assemble FFC insertion
- 9.3.6 Assemble the FPC
- 9.3.7 Assemble back shell
- 9.3.8 Assemble the horn cover
- 9.3.9 Locking the back shell
- 9.3.10 Assemble Accomplished

#### 9.4 Notes of Disassembly and Assembly

#### 10.Wall-mounted Components

#### 11.Defests' Codes

#### 12 .FAQ


# 1. Specification

Product Definition

Item 项目		Description 描述
Project Name 项目名	Project Main information	
	TV size (电视尺寸)	43"
	Internal project name (项目代号)	V74*(第四码见差异表)
	Local sales model name (市场销售名称)	L43M5-5ASP
	Sale Region(销售国家)	Europe 欧洲
	Certification Test (认证测试)	CE/包装指令/BQB/HDMI/ERP(能效认证)
	Environment Requirement (环保要求)	RoHS/WEEE
	License list 专利	HDCP/HDMI/DTS/TUXERA/AAC(2 channels)/Dolby MS12D
	Equipment Type (设备类别)	Smart TV(带MEMC, 预装Netflix+HbbTV+Prime video)
	Software Certification (软件认证)	CTS/GTS/CI+ /Netflix/Prime video/HbbTV 2.0 (带, 不过认证)
	Energy Star (能耗等级)	N/A
	Power Consumption(电源功耗)	85W
	Voltage (电压)	100~240V~50/60HZ
Product Information 产品基本信息		
Mechanical properties (结构特性)		
Color (颜色)		不锈钢+喷锡色(Gun gray)
Dimensions带底座尺寸with stand (长*宽*高) L*W*H		959.55mm*208.33mm*608.14mm
Dimensions不带底座尺寸 without stand (长*宽*高) L*W*H		959.55mm*80.9mm*556.76mm
Dimensions底座尺寸stand size (长*宽*高) L*W*H, 材质		208.2*54.4*53.15mm, 铝质
Dimensions后盖尺寸backcover size (长*宽*高) L*W*H, 材质		346.55mm*438mm*32mm HIPS
Dimensions整机尺寸FG with box (长*宽*高) L*W*H, 材质		1128mm*142mm*652mm
Weight (重量)整机重量(不含脚座) + 套袋		7.2kg
Weight (重量)底座重量		0.12kg(一对)
Packing Weight 包材(重量)		2.18kg
Packing Weight (配件)		0.5kg
Weight (重量)带外包装整体重量		10kg
Wall mount (挂架), 螺丝尺寸		300*300
侧插I/O		Yes
背插I/O		No
下插I/O		Yes
Main Board (主板相关参数)		
PCB厚度		1.6mm
主板名称		1+1+1 (单独主板+单独电源板+单独MEMC)
驱屏插座		V by one
调试串口		Yes
LCM properties (屏幕特性)		
Size (尺寸)		43inch
Diagonal (对角线尺寸)		1079.87mm
Cell Type (屏幕类型)		LGD RGB/CSOT
Panel number (屏幕型号)		LGD LC430EQY-SMA3 /CSOT ST4251D01-5
Interface (接口类型)		V by one
Resolution (分辨率)		3840*2160
Refresh Rate (刷新率)		60HZ
G to G Response time (响应时间)		6.5ms(Typ)
Viewing Angle (可视角度)		178°(H)/178°(V)
膜片		1张扩散片+2张棱镜片
Color Depth (色数)		16.7M 8bit
Color Gamut (色域)		68% (min)/72% (TYP)
Color temperature (色温)		(10000+ - 3000)K
Luminance Uniformity (亮度均匀性)9点		65%(min)
Brightness (整机亮度)		250nits(typical)/220nit (min)
Backlight (背光)		OD 30
Lighting bar Location (灯条位置)		背部矩阵排列
Lighting bar Segment Qty (灯条分区数)		1
Lighting bar LED Qty (灯总数)		3*7 (灯条带专利)
Dynamic backlight (动态背光)		Global Dimming(default off)

Basic  
Product  
Information  
产品基本信息

◇ Application Processor (AP芯片组)	
◇ Operating system (操作系统)	Android 9.0
◇ Platform (平台)	MSD6886NQGA-8-0BJA + NT72353
◇ CPU(处理器)	CA55*4
◇ Frequency (主频)	up to 1.5G Hz
◇ L2cache (二级缓存)	512KB
◇ GPU(图形处理器)	
◇ 3D Graphics (3D图形)	Mali 470 MP3 up to 650MHz
◇ OpenGL (图形程序接口)	Yes ES 1.1/2.0
◇ OpenVG (矢量图形算法)	Yes VG 1.1
◇ Rendering to UHD (超高清渲染)	No
◇ Flash graphic format (Flash图形格式)	No
◇ MEMC(运动动态补偿)	UHD 60HZ
◇ Audio Amplifier(功放芯片)	TAS5707PHPR
◇ Storage(存储)	
◇ System memory (系统内存)	2G
◇ Internal memory (内置内存方式)	8G
◇ Extend memory (扩展内存方式)	No
◇ USB (通用串行总线)	
◇ USB 2.0 Host	Yes
◇ USB 3.0 Host	No
◇ HDMI (高清多媒体接口)	
◇ HDMI CEC	Yes
◇ HDMI 1.4a 3D	No(芯片支持, 软件不支持)
◇ HDMI 1.4a ARC	Yes
◇ HDMI 1.4a UHD	Yes
◇ HDMI 2.0	Yes
◇ MHL (移动高清多媒体接口)	
◇ MHL 2.1	No
◇ Input source (输入信号)	
◇ RF	Yes
◇ ATV/DTV	DTV
◇ DVB-S2	Yes
◇ DVB-T2/C	Yes
◇ VGA	No
◇ AV	Yes
◇ HDMI	Yes
◇ Output source (输出信号)	
◇ Coax (spdif)	No
◇ Earphone	Yes
◇ 喇叭	
◇ Audio Power / speaker	2*8W 6ohm 单体
◇ Wireless/Internet (无线/互联网)	
◇ WiFi (无线局域网)	模组外挂:
◇ Bluetooth (蓝牙)	支持 802.11 a/b/g/n/ac (2x2) 2.4G&5G
◇ Wifi/Bt chip/module (芯片/模组)	支持Bluetooth 4.2、BLE
◇ Antenna (天线)	MTK7668BU (USB接口)
◇ LAN (以太网)	双天线
◇ Remote control (遥控器)	
◇ IR (红外线)	No
◇ Bluetooth (蓝牙)	Yes
◇ Air mouse (空鼠)	No
◇ Findme (寻找提示)	No

◇ Socket (接口)		
◇ AC Socket (AC 电源插座)		1个
◇ RF Socket (射频插座)		2个(T2/C+S2)
◇ S/PDIF (音频接口支持S/PDIF)		No
◇ HDMI (高清多媒体接口)		3个
◇ CI+ card卡槽		1个
◇ VGA		No
◇ AV		1个 (3孔)
◇ USB 2.0		3个
◇ USB 3.0		No
◇ LAN RJ45 (以太网接口)		1个
◇ Power Key (开机键)		1个
◇ Optical (光纤口)		1个
◇ Earphone out(耳机输出)		1个
Function 软件基本功能		
◇ Video decoder (视频解码)		
◇ H.265		Yes
◇ H.264		Yes
◇ H.263		Yes
◇ VP8/VP9/VC1		Yes
◇ MPEG1/2/4		Yes
◇ Sorensen spark		Yes
◇ Audio decoder (音频解码)		
◇ DOLBY		Yes
◇ DTS		Yes
◇ FLAC		Yes
◇ AAC		Yes
◇ OGG		Yes
◇ Image decoder (图片编解码)		
◇ PNG		Yes
◇ Gif		Yes
◇ JPG		Yes
Packing 包装		
◇ Accessory Box (附件盒)		
◇ Remote control (遥控器)		蓝牙语音遥控器AR14
◇ Alkali Battery (电池)		见差异表
◇ Screwdriver (螺丝刀)		No
◇ Screw Bag (螺丝包)		Yes
◇ Antenna Isolator (天线隔离器)		No
◇ RF Adapters (电缆转接头)		No
◇ S/PDIF cable (S/PDIF 线)		No
◇ 能效标签		yes
◇ Stand (脚座)		Yes
◇ Use Manual & Warranty Card (说明书)		yes
Reference ID 参考图		
Reference ID 参考图		
ID说明	1. 前框二件式：不锈钢一件式折弯(深蓝色+拉丝)+铝挤底侧(接近深蓝色+拉丝)；前框T/L/R 7.9mm，地侧：16.9mm 2. Mi LOGO 为冲压批花工艺； 3. SGCC背板+ABS小后壳(V0材质)；1st thickness 8.9mm 4. 黑色压铸底座。	

## 2. Packing Parameter

Packing list	machine	1 TAI
	base	2 EA
	accessory bag	1 BAG
	Remote control	Voice Bluetooth remote controlle
	screw	4 EA

包装清单

## 3. DOA/DAP Inspection Criteria

### TV Core Union Inspection Criteria

测试条件 test conditions	
环境温度 The environment temperature	15℃~35℃
相对湿度 Relative humidity	25%RH~75%RH
照度 Intensity of illumination	Appearance inspection:500-800LUX,
	Image inspection: 0-150Lux

检验标准表

**Notice:** Please do refer to Product Inspection Area Identifications and Appearance Defaults Form as long as detect any product via mentioned Inspection Method above, unless defective products are out of the range of criteria.

### 3.1.1 Inspection Tools


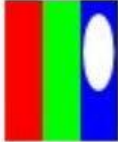

测试治工具 Testing tools		测试仪器设备 Test equipment	
1.厚薄规 feeler gauge		1.全电源 Variable frequency power supply	220V/50HZ
2.直尺 straightedge		2.MIK Signal generator	
3.角度规 angle gauge		3.PC主机	普通主机
4.敲棒 Knock		4.色温仪 The color temperature	CA 310
5.软尺 tape		5.功率计 dynamometer	
6.放大镜 magnifying glass		6.DVD	
7.点规 point gauge		7.无线、有线网 network	
8.USB	2.0/3.0	8.功放 The power amplifier	(支持bluetooth、ARC、CEC、同轴等功能测试)
9.ND	5%		

#### 检验工具





### 3.1.2 Defects Definition

Detect Category	Identification	Image Display
Segment Difference	Matching deviation caused by process precision deviation during two modules mold inserting or processing front& back modules' die joints location.	
Spot Defaults	Dot shape defects, Sized with maximum area of Detected area	
Likeness Color Spot	There are different color in part of the cover. There are same color spot in unlikeness color spots.(ins, dark red and bright red)	
Oil Stain	Greasy dirt in the plastic surface.	
Bubble	Bubbles are shaped in high temperature resin when water is steamed because materials are not wholly dried before shaped.	
Excessive painting	Oil painting accumulation phenomenon in certain part of the painted parts.	
Orange Peel	Orange peel shape crowfoot cracks appear in the painted layer	
Particle	Fine particle attached to the painted layer	
Flocks	Slight string shape phenomenon result from fabric materials and rag attached to painted layer	
Chromatic Aberration	Painted layer colors differ from standard color boards and Customer Reference Samples	
Unlikeness Color Spot	The Colors in surface differ to its surroundings.	
Sensible Scratch	Conspicuous scratch inspected by Visual Inspecting.	
Insensible Scratch	Unconspicuous scratch inspected by Visual Inspecting.	
Foreign Material	The impurities in the gaps of LCD and backlight layer, which cannot change in the background of R/G/B.	
Light Spot	Single unrecovered pixel	
Dark Spot	Black spot (not foreign material) appeared in white background	
Adjacent Spot	Equivalent to a pair of pixels	

### 缺陷定义

### 3.1.3 Appearance Grade Definitions

Appearance grade	Definition
A	LCM display area ,front half part of bottom holders, front lower edge.
B	Frame, back half of bottom holder
C	Back cover

外观级面定义`表

区域	部件位置	操作目视频率	范例
A	正面	经常	如下图
B	其他外观面	偶而	如下图
C	其他外观面	很少	如下图

外观级面定义`图

### 3.1.4 Unit&Abbreviation

Abbreviation	Description
L	Length
D	Diameter
W	Width
N	Amount
S	Area

单位及缩写

### 3.1.5 Appearance Inspection Standards

1

Front Frame			
Appearance phenomenon	A face	Plane B	C plane
protective film length	Protection film must not be greater than 1.0cm, beyond edge must not exceed 1.0CM		
Protective bubble	limit sample		
Protective film breakage	NO		
Protective membrane foreign body	≤ 0.3mm, minimum distance 100MM <sup>2</sup>	≤ 0.5mm, minimum distance 100MM <sup>2</sup>	≤ 0.7 mm, minimum distance 100MM <sup>2</sup>
Surface scratches, discoloration	≤ 0.3mm, minimum distance 100MM <sup>2</sup>	≤ 0.5mm, minimum distance 100MM <sup>2</sup>	Does not affect appearance and function
Particles, impurities, scraps	Within 100MM distance: 1 Area ≤ 0.5MM <sup>2</sup> allowed 2 (incl.)	Within 100MM distance: 1 Area ≤ 0.7MM <sup>2</sup> allowed 2 (incl.)	Does not affect appearance and function
	Area ≤ 0.3MM <sup>2</sup> allowed 6 (incl.)	Area ≤ 0.5MM <sup>2</sup> allowed 10 (incl.)	
	Only 6 are allowed on the same side (including)	Only 10 are allowed on the same side (including)	
	{ "error_code": 30002, "message": "trans result is empty" }		
Insensible/sensible scratch (not to fall off)	A☐: L≤5.0MM W≤0.15MM d≥200MM N≤2 B☐: L≤5.0MM W≤0.5MM d≥200MM N≤4		
Color difference	前框ΔE≤1.0 ΔL≤0.7 Δa≤0.5 Δb≤0.5 + limit sample		
Oil / dirt	Unacceptable		
orange peel	Unacceptable		
Spilled paint	Unacceptable		
Metal brim	Limit sample hands are unharmed A\ x {e16c} B ≤ 0.1MM C ≤ 0.15MM		
Deformation	Does not affect gap segment difference and function		
LOGO	No defects allowed in 1.LOGO 2. For screen printing LOGO, text position and tilting degree within MAX-MIN 1.0MM 3. Trademark length 30MM ≤ 1.0MM length > 30MM ≤ 2.0MM 4. Trademark offset within MAX-MIN 1.0MM		

Rear shell (plastic bite)				
2	Appearance phenomenon	Specifications		
	Woolly edge	≤0.2MM	≤0.3MM	≤0.3MM
		The size of the brimstone is within the specification and, without hanging up, agrees in principle to be released directly (allowing rework, but not being allowed to peel meat)		
	Bite flower	In order to admit that the sample under the visual inspection standard, visual comparison of the productundefineds bite if the result of OK, the productundefineds bite can be judged by OK.		
	Shrink, Gap, join Line, Shadows, creases, Top White	limit sample		
	Gate	Unacceptable	Can't affect assembly, function and appearance, you can refer	
	Oil / dirt	Not allowed		
	Label	Do not deviate, dirty, content reference to the limited sample		

Rear shell (iron spraying)			
Gauge areas: appearance face (drawing nano)			
Appearance phenomenon	Specifications		
Particles, impurities, scraps (non-shedding)	A $\square$ : A $\leq 0.5\text{MM}^2$ d $\geq 100\text{MM}$ N $\leq 2$ B $\square$ : A $\leq 1.5\text{MM}^2$ d $\geq 100\text{MM}$ N $\leq 4$		
Concave point (negative not concave), bulge	A $\square$ : A $\leq 0.5\text{MM}^2$ d $\geq 100\text{MM}$ N $\leq 2$ B $\square$ : A $\leq 1.5\text{MM}^2$ d $\geq 100\text{MM}$ N $\leq 4$		
Insensible scratch. Visual signs are clearly judged by perceptual scratches.	A $\square$ : L $\leq 5.0\text{MM}$ W $\leq 0.15\text{MM}$ d $\geq 200\text{MM}$ N $\leq 2$ B $\square$ : L $\leq 5.0\text{MM}$ W $\leq 0.5\text{MM}$ d $\geq 200\text{MM}$ N $\leq 4$		
Sensory scratch	Within 200MM distance, $\leq 10\text{MM}$ allowed 1 (cumulative length $\leq 10\text{MM}$ )		
Spray, drawing luster & Color difference	Reference to the limited sample, the main visual, equipment as a supplementary		
Rust spot	The rust of the cutting face shall not fall off, and the other surfaces shall not have		
Oil / dirt	Unacceptable		
Orange peel, drop paint.	Unacceptable		
Spilled paint	limit sample		
Metal brim	limit sample		
Deformation	Unacceptable		

Rear Shell (VCM material)		
4	Gauge areas: appearance face (drawing nano)	
	Appearance phenomenon	Specifications
	Particles, impurities, scraps (non-shedding)	A区: $A \leq 0.5\text{MM}^2$ $d \geq 100\text{MMN} \leq 2$ B区: $A \leq 1.5\text{MM}^2$ $d \geq 100\text{MMN} \leq 4$
	Concave point (negative not concave), bulge	A区: $A \leq 0.5\text{MM}^2$ $d \geq 100\text{MMN} \leq 2$ B区: $A \leq 1.5\text{MM}^2$ $d \geq 100\text{MMN} \leq 4$
	No scratch	A区: $L \leq 5.0\text{MM}$ $W \leq 0.1.5\text{MM}$ $d \geq 200\text{MM}$ $N \leq 2$ B区: $L \leq 5.0\text{MM}$ $W \leq 0.5\text{MM}$ $d \geq 200\text{MM}$ $N \leq 4$
	Sensory scratch	A区: $L \leq 5.0\text{MM}$ $W \leq 0.1.5\text{MM}$ $d \geq 200\text{MM}$ $N \leq 2$ B区: $L \leq 5.0\text{MM}$ $W \leq 0.5\text{MM}$ $d \geq 200\text{MM}$ $N \leq 5$
	Gloss & Color difference	Rear shell $\Delta E \leq 1.0$ $\Delta L \leq 0.7$ $\Delta a \leq 0.5$ $\Delta b \leq 0.5$ 依照IQC限度样品
	Rust spot	The rust of the cutting face shall not fall off, and the other surfaces shall not have
	Oil / dirt	Unacceptable
	Orange peel, drop paint.	Unacceptable
	Spilled paint	limit sample
	Metal brim	limit sample
	Deformation	Unacceptable

Foot pedestal (die casting spray)			
5	Appearance phenomenon	A face	Plane B
	C plane		
	1. If the color difference, but the combination of good color match, no significant difference, acceptable		
	2. When combined, the overall color difference is obvious and unacceptable		
	3. 50CM distance confirms polished sand mark, visible, unacceptable		
	4. Forward tilt $0.5^\circ$ , backward $1.5^\circ$ pitch angle: $89.5^\circ - 91.5^\circ$		
	Spindles, vents, impurities	No	{ "error_code": 30002, "message": "trans result is empty" }
	Bruising	$\Phi \leq 2\text{MM}^2$	Minor $\Phi \leq 4\text{MM}$ "serious $\Phi \leq 3\text{MM}$ "
	Scraping injury	No sense $\leq 10\text{MM}$ width < 0.1MM (1), feeling not allowed	{ "error_code": 30002, "message": "trans result is empty" }
	Electroplating white dot hole	$\Phi \leq 0.3\text{MM}$ ", no more than 2 points within 10CM distance	$\Phi \leq 0.5\text{MM}$ ", no more than 4 points within 10CM distance
	Oil injection point	$\Phi \leq 0.3\text{MM}$ ", no more than 2 points within 10CM distance	$\Phi \leq 0.5\text{MM}$ ", no more than 4 points within 10CM distance
	Blistering	No	
	manner of packing	Reference sample	
	Polishing roughness	Hand judgment can't be boned, vision can't be distorted.	No bony and distorted visual
	Heterocolor	Not allowed	B face away from 60CM visual, slightly less visible acceptable
	C-face perimeter contour	50CM distance, visual no obvious sharp angle or missing angle, deformation phenomenon. No burr-free scraping around	
	Between the front frame and the PANEL (from PANEL glass to the inside of the plastic front frame, GAP size	1) Black edge: left / right lower MAX-MIN $\leq 1.5\text{MM}$ 2) left and right angle difference: $\leq 1.5\text{MM}$ 3) below 40 inches (including): $\leq 1.2\text{MM}$ MAX-MIN $\leq 0.8\text{MM}$ 4) _ 50 _ ): $\leq 1.3\text{MM}$ MAX-MIN $\leq 0.8\text{MM}$ PANEL front frame seams, The left or right side and the lower side shall not have obvious jumping knife, the upper part may be allowed not greater than the 1.0MM corner jump knife to cause the gap must not be greater than the 1.0MM	
	Segment difference (see figure below)	Front frame and back plate $\leq 1.0\text{MM}$ front frame and rear shell $\leq 0.5\text{MM}$ rear shell and back plate (GAP) $\leq 0.6\text{MM}$	

外观检验标准-表

3.1.6 Function Detected Criteria

Inspection items			Decision criteria
1	Bright dot (area ≥ 50%)	1dot (R/G/B) (1点)	N≤0
		2dot (two-point connection)	N≤0 pairs
		64Grad	N≤10
	dark spot	1dot (single Dark Point)	N≤8 two-point spacing L>20MM
		Two-point horizontal / vertical connection	N ≤ 2 pairs two-point spacing >
		3dot	N≤0
	Total Dot Defect		N≤7
	Foreign Material Scratch	Linear foreign body line	0.15≤W≤0.4
			0.3≤L≤5.0
		Circular foreign body dot	0.3≤D≤1.0
			N≤5
	Mura	1)5%ND filter occlusion (50% of gray-scale images are decision images, maximum slope ±45 ° ) distance: 50-100CM	
	light leak	DQE: 1) Front ±45 ° invisible distance: above 60CM distance: more than 60 cm 2) backside projecting light invisible Projected light is not visible 3) specific reference to DQE standard	

功能检验标准-表

3.1.7 Gap/Range Difference （mm）

position	MI TV 43 INCH
The gap between the front frame and the screen	≤0.8mm
The gap between the front frame and the back cover	≤1.0 mm
The stage between front frame and back cover	≤1.0 mm
USB and I/O gap	A≤1.5mm

段差縫隙-表

4. 7 Days No Reason to Return Products’  
Inspection& Acceptance Standards

4.1 Inspection Methods



## 4.2 Defects Definition

Defects Category	Identification
Insensible Scratch	Deeply Scratch
Sensible Scratch	Without deeply scratch
Gouges	Damaged by impact from external forces
Damage	Fracture, damage
Deformation	Deformation caused by external forces
Painting Peel Off	unlikeness color caused by painting layer dropping out
Warranty Label Damage	Warranty Label missing or incomplete

缺陷定义-表 2

## 4.3 Appearances' Inspection Criteria

Defects' Category	Position	Identification Criteria	Acceptable Standard
Sensible Scratch	A side(LCD)	Length $\leq$ 35 mm, width $\leq$ 0.6 mm	$\leq$ 4 pcs
	B Side	Length $\leq$ 35 mm, width $\leq$ 0.6 mm	$\leq$ 5 pcs
	C Side	/	Acceptable
Insensible Scratch	A side(LCD)	Distance between 2 Spots $\leq$ 250mm Length $\leq$ 12 mm, Width $\leq$ 0.6 mm	$\leq$ 1 pcs
	B Side	Distance between 2 Spots $\leq$ 250mm Length $\leq$ 38 mm, Width $\leq$ 0.6 mm	$\leq$ 2 pcs
	C Side	Distance between 2 Spots $\leq$ 250mm Length $\leq$ 38 mm, Width $\leq$ 0.6 mm	$\leq$ 3 pcs
Gouges	A side(LCD)	/	Unacceptable
	B Side	/	Unacceptable
	C Side	/	Unacceptable
Damage	LCD	LCD damaged (light the LCD to identify)	Unacceptable
	Brushed Back Board	/	Unacceptable
	Core Union/Subwoofers/Loudspeaker Box	/	Unacceptable
Deformation	LCD	/	Unacceptable
	Frame	/	Unacceptable
	Brushed Back Board	/	Unacceptable
	Core Union/Subwoofers/Loudspeaker Box	/	Unacceptable
Scratching/Fluffing	Core Union fabric net	/	Unacceptable
Painting Peel Off	Subwoofers/Loudspeaker Box	/	Unacceptable
Component Missing(Screws included)	ALL included	/	Unacceptable
Warranty Label Damage	Screw hole	Damaged or Missing	Unacceptable

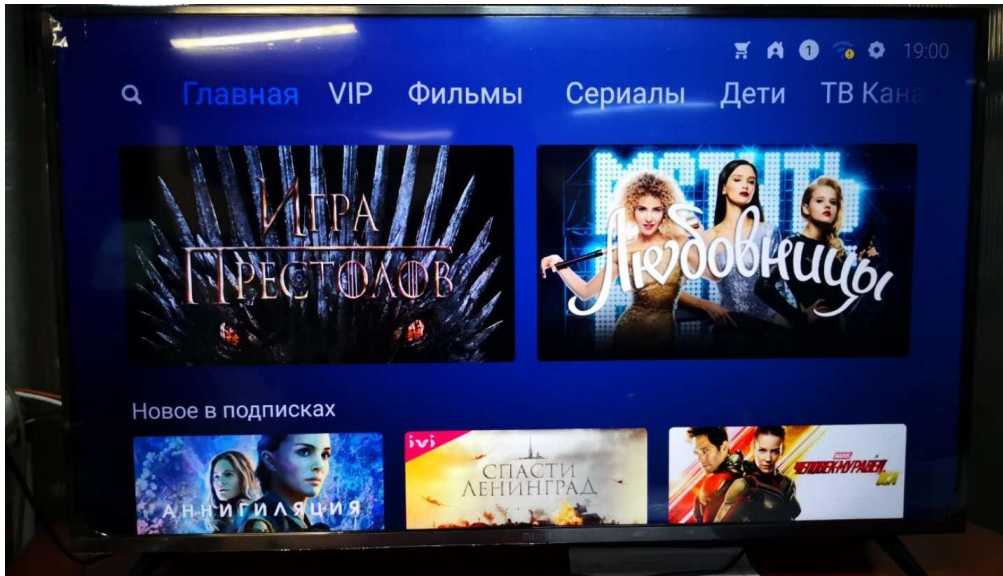
外观检验标准-表 2

# 5. Function Test

## 5.1 Electronic Performance Test

### 5.1.1 Start Up Test

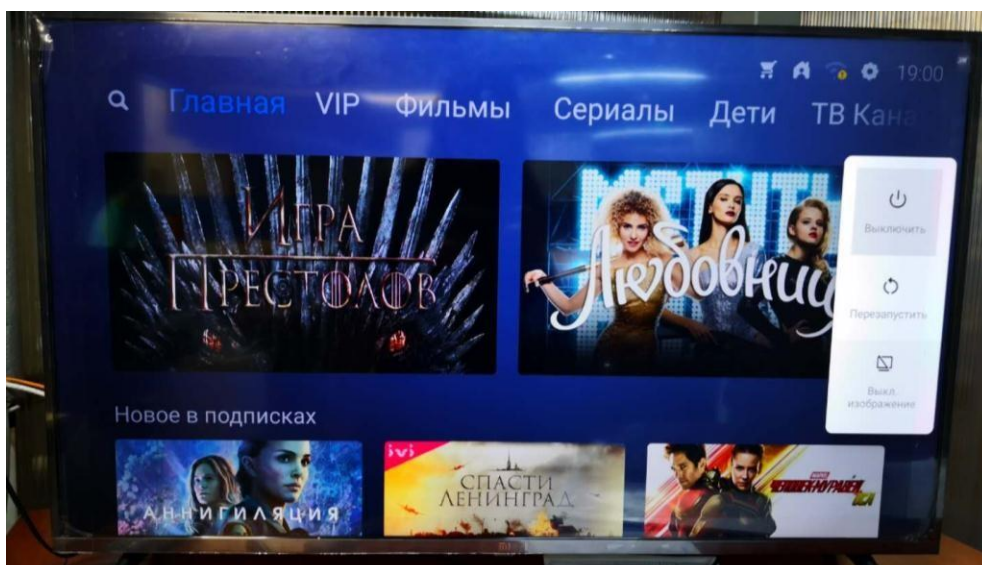
Power on TV. Press power button on Remoter. Wait for TV enter Home screen.



主界面

### 5.1.2 Power Off/Reset Test

Hold press Power button , recall Menu to press power off/reboot when it is in powered on status, then press confirm button to choose relevant mode.



关机

Reboot : Mi TV will step into reboot mode after press it.

Power off : Mi TV will step into sleeping mode when you press the icon. It will step into default power off mode if there is no selections after 20 seconds automatically.

Screen off : The screen will shut down with videos playing.

## 5.2 Signals Resources Test

HDMI Port : Insert HDMI Cable to HDMI devices and inspect if the images and sounds are regular or not.

USB Port : Verify the functions via insert U Flash Disk or external HD.

AV Port : Insert AVI Cable to AV devices and inspect if the images and sounds are regular or not.

CI Port : Insert CI card to verify scan channel function and inspect if images and sounds are regular or not.

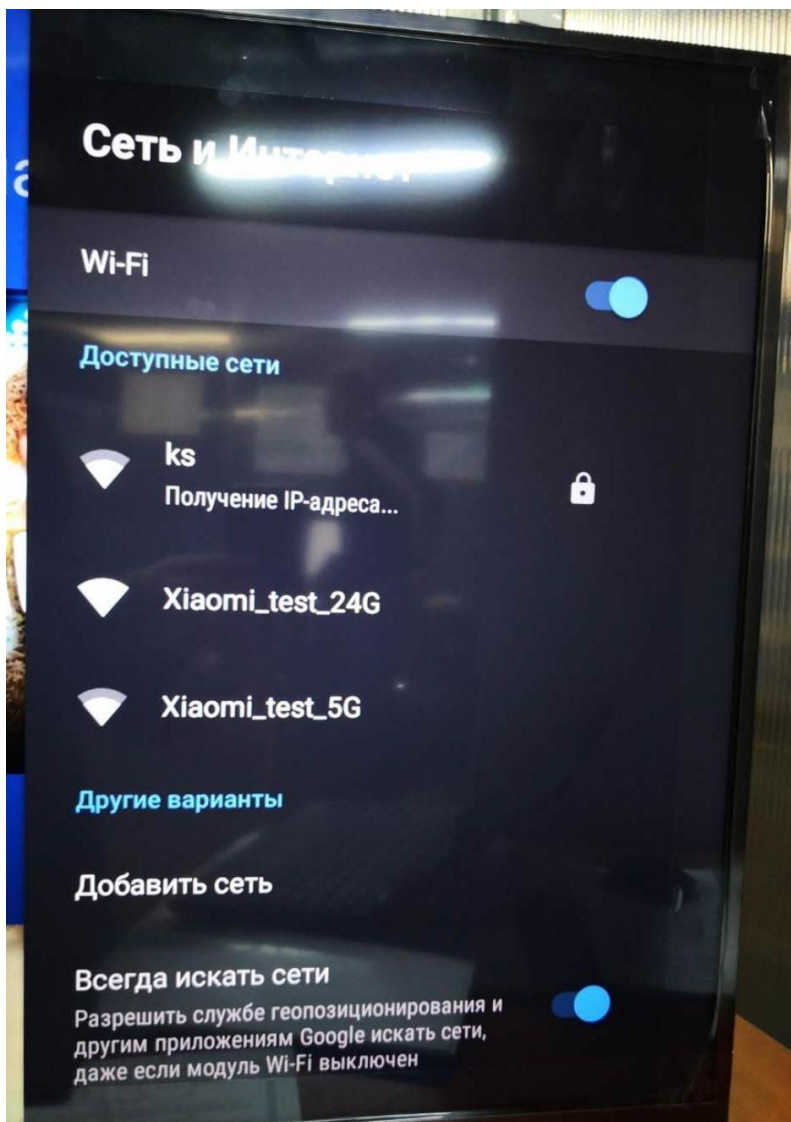
Audio out Port: Check if the sound output is regular or not via connect earphone or speakers.

## 5.3 Network Setup

### 5.3.1 Wireless Connection

Confirm to Wi-Fi connection when you step into MI TV Customer setup. Then choose an available Wi-Fi network and input your password.





wifi

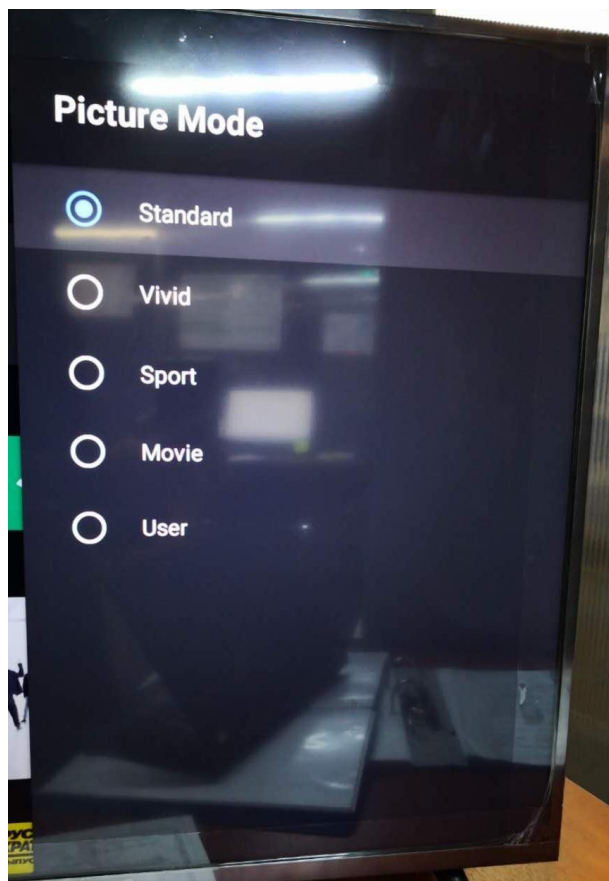
### 5.3.2 Wired Connection

The network will be connected automatically when inserting network cable to LAN port and the network will connect automatically.

Mi TV will give priority to wired connection when we connect wired and Wi-Fi at the same time, Wi-Fi will be disconnected.

## 5.4 Display Parameter Adjustment

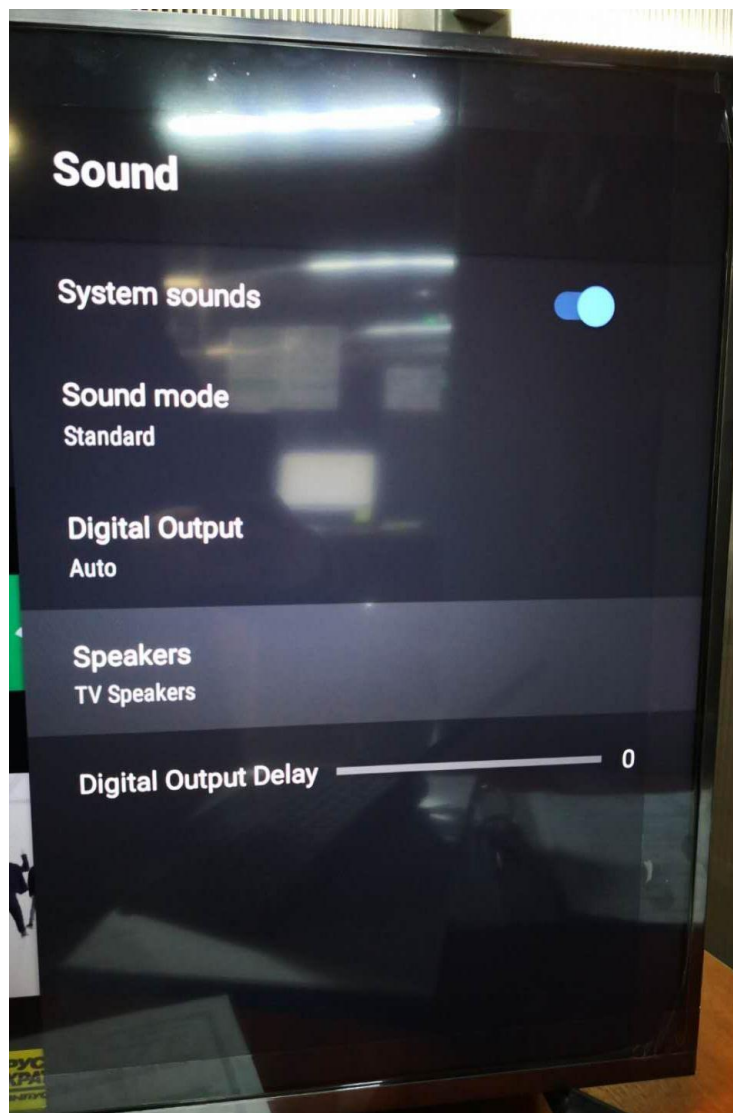
Settings->Device Preferences->Picture->Picture Mode parameters Then you can adjust parameters for display video.



图像参数

## 5.5 Audio Out

Settings->Device Preferences-> Sound



小米家庭音响

Internal Speakers : Enteral speakers are regular but it is malfunctioned when it connects to sound bar.

Sound Bar : Sound bar is regularly but it is malfunctioned when it connects to internal speakers.

HDMI ( ARC ) &S/PDIF : External speakers are regularly but it is malfunctioned when it connect to internal speakers.

## 5.6 Online Film and TV Resources

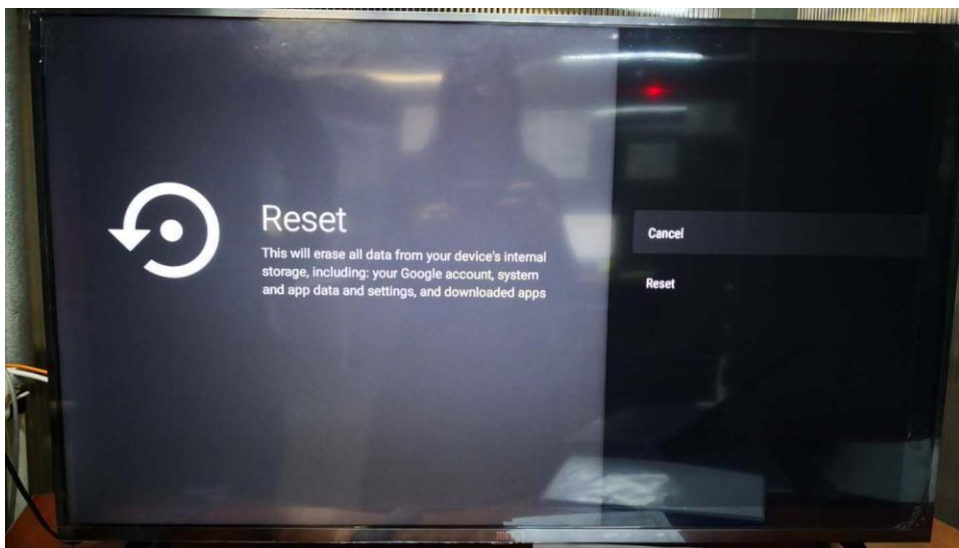
You can choose online video resources that you are interested in on Menu screen when you connect to network successfully, ensure that the video display and sound is stable and regular. Pleas pause the video and wait for the display stuttering is meliorated when you face display stuttering problems.



在线视频

## 5.7 System Recovery

You can solve software issues by entering Settings->Device Preferences ->Reset when you confront application or system issues.



还原

## 6. Online Upgrade

### 6.1 Smart Update

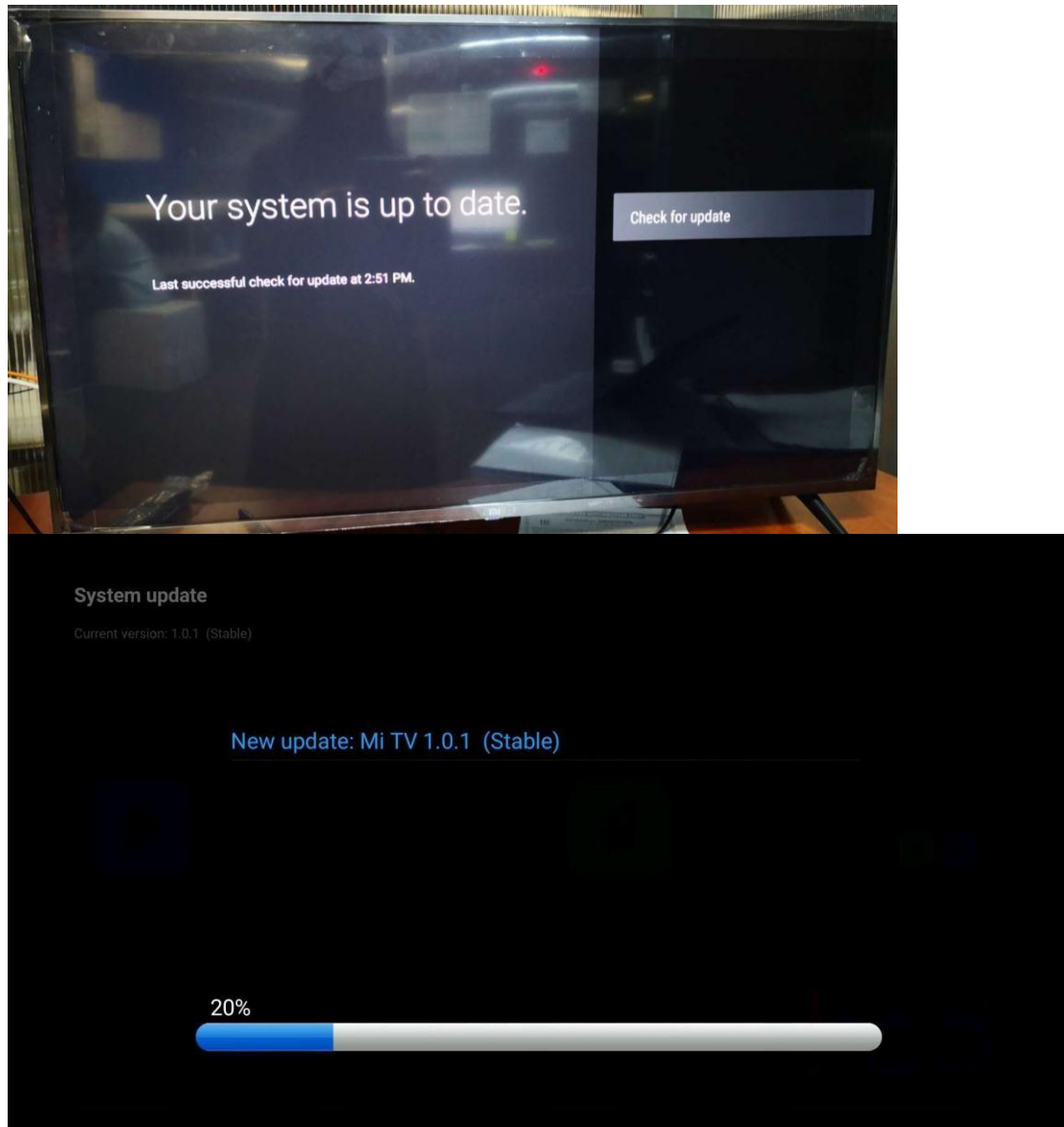
Auto update selection needs on the basis of actual requirement.

Auto update selection-On : MI TV will update to the latest version at a proper time when there is a latest version of MIUI system package available online.

Auto update selection-Off : It is necessary to update your MITV to the latest MIUI system manually when there is a latest version of MIUI system available online.

## 6.2 Manual Update

Enter MITV Settings-->About -->system update to update MIUI system Manually.



手动更新

## 6.3 U disk upgrade

Download ROM from KBS system and uncompressing it, copy it to directory root of U Flash. Then insert the U disk into the TV, press the boot button for a long time, and AC power on.

Notice: Do not edit the name of files, or the TV will not recognize update software.

## 7 .Data Clean （Trio-Clean）

### 7.1 Switch off TV

### 7.2 Activate Trio-Clean Interface by Remoter

Bluetooth remoter : Pull up MITV power cable for 3 second then reconnect it. Hold **【Confirm】** and **【Back】** simultaneously and face it to white LED on the bottom when it start to flash. Wait for MITV recovery screen come out.

Infrared Remoter : Hold **【HOME】** and **【Menu】** then head it to the flashing white LED on the bottom. Then hold the power on button until MITV recovery screen came out.



蓝牙三清

## 7.3 Reset System

Select these items by sequence (WIPE CACHE, WIPE USER DATA, and WIPE ALL DATA), then select Restore SYSTEM and reboot TV.

## 8 .Get Beta test license

1.Follow below forms to collect all information about Detect Samples , and deliver it to relevant staff.

Area + Name	MAC	SN	Type	SW Version	Detect Description
Ins. MAHARASHTRA+Aafiya Ansari	00:9E:C8:**:**	12272/**	4A-32	1.3.8	Online Video Flash Back

加内测

2 . When the Beta test license provided, do inform customer to reset Mi TV and verify TV in Beta system.

## 9. Liquid Crystal Display Television's Disassemble and Assemble instructions

### 9.1 Tools preparation

Tool Name : Electric Screw Driver(Bosch GSR12-2 )

Purpose of Tools : Assist for removing or installing screws Torque

Adjustment : [5kgf.cm](http://5kgf.cm)



电动改锥

---

Tool Name : Antistatic gloves

Purpose of Tools : Prevent static to damage electronic components





防静电手套

Tool Name : Snap Dissemble Tool

Purpose of Tools : Disassemble four snaps connected loudspeaker backcover and front frame



## 9.2 Disassemble

### 9.2.1 Disassemble Pedestals

check the maintenance table without screws and other foreign bodies, the product mirror face down, horizontal position with the table; use the screwdriver to disassemble the base screw, remove the left and right base bracket;



### 9.2.2 Disassemble the back shell

Remove the rear shell 5pcs screw with the screwdriver, and then remove the rear shell for temporary storage;



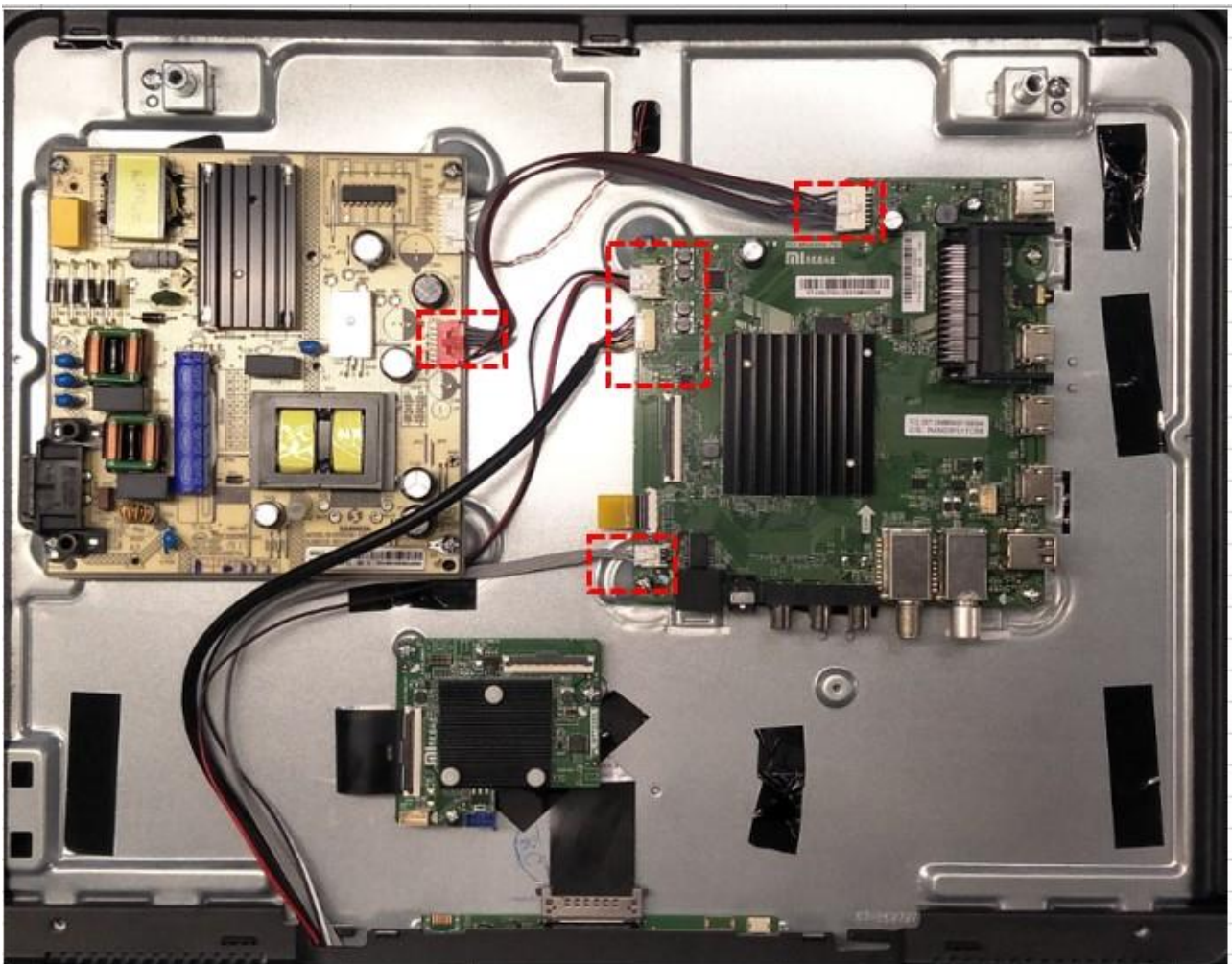
### 9.2.3 Disassemble the horn cover

Remove the 6pcs screw that holds the horn cover with the screwdriver;



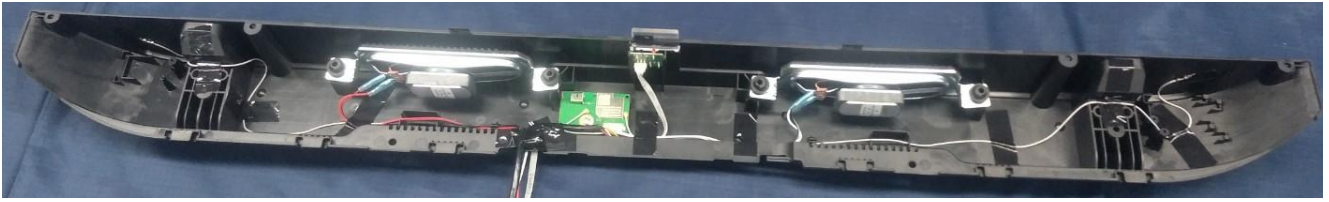
### 9.2.4 Disassemble the connect wire

- a. Unplug the control line from the motherboard and the power board.(red below)

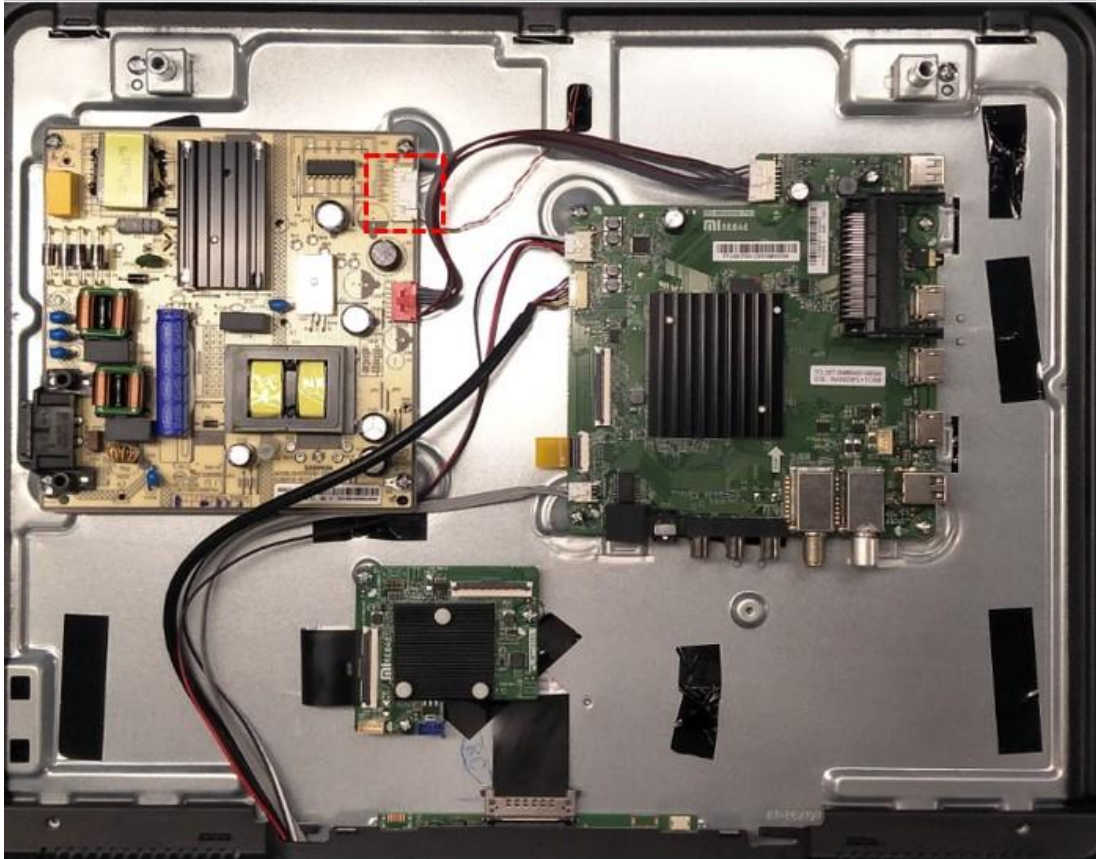


- b. Remove the speaker and remove the cable from the discrete parts around the motherboard. Remove the horn cover for separation.

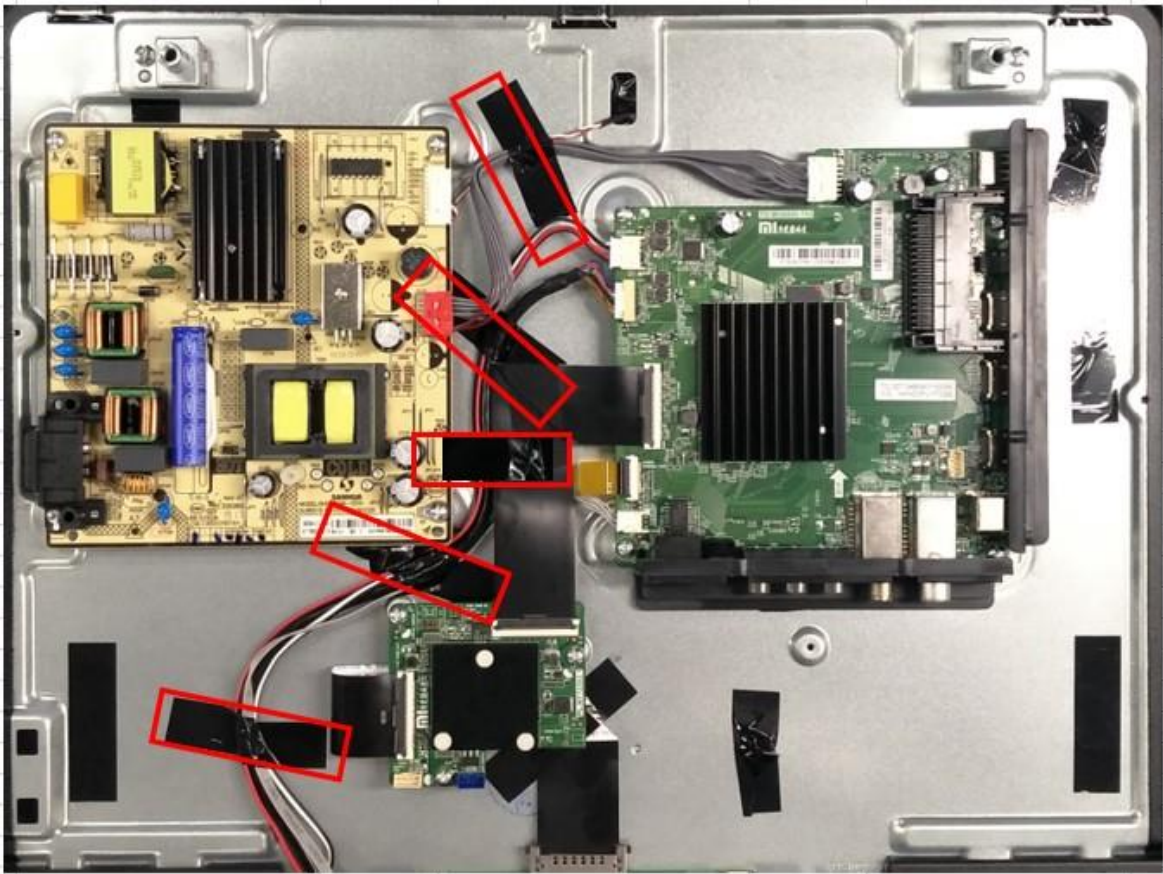




- c. Pull the back light out of the power board connector;

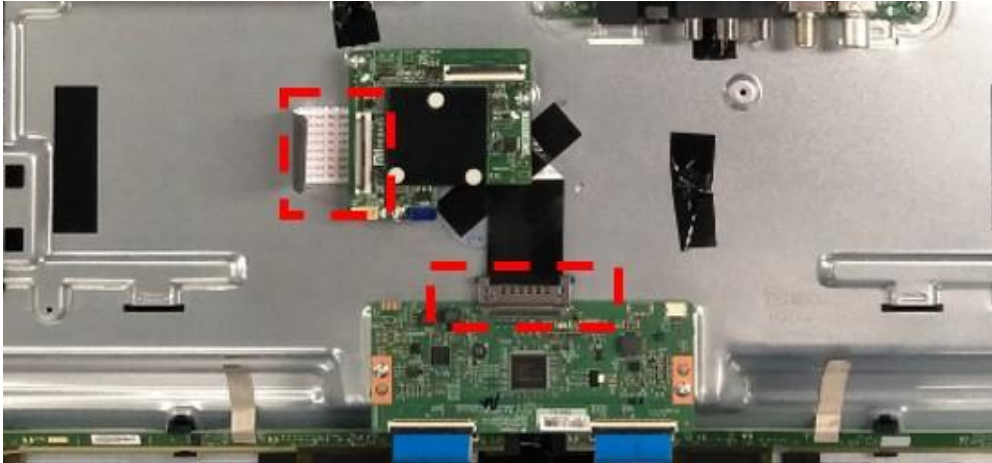


- d. Remove the acetate tapes fixed wire from the back plate;like this photo.

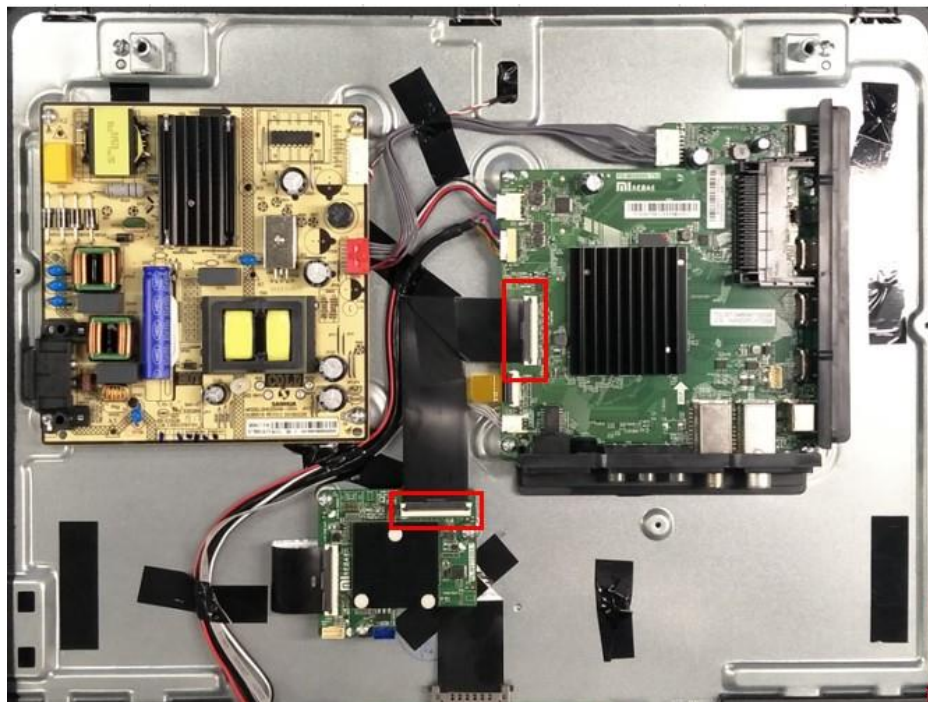


## 9.2.5 Disassemble the FFC wire

- a. Open the piano cover of the MEMC to unplug the FFC line, and pull the FFC line from the T-CON board. Then remove the two ends of the FFC line from the interface between the MEMC and the T-CON board;



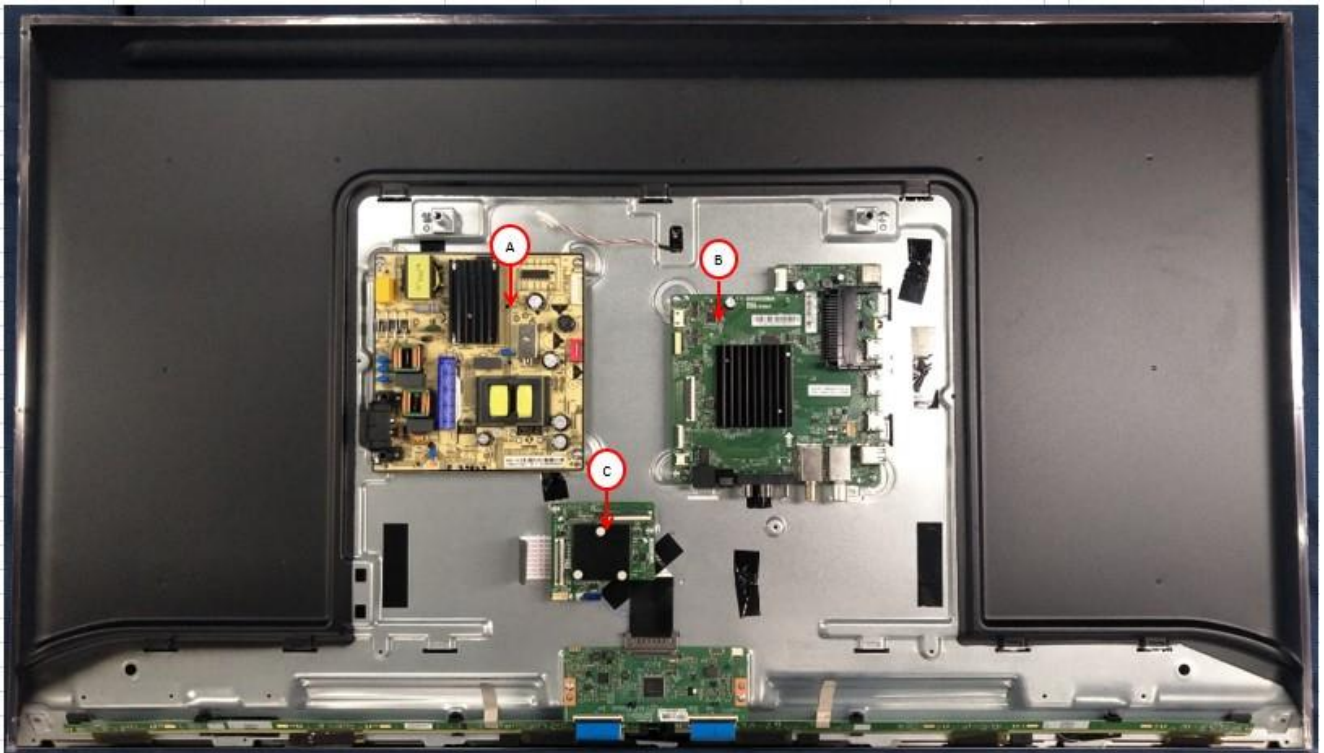
- b. Open the piano cover of the MEMC and MB to unplug the FFC line. Then remove the two ends of the FFC line from the interface between the MEMC and the MB;



## 9.2.6 Disassemble the MAIN Board and the POWER Board

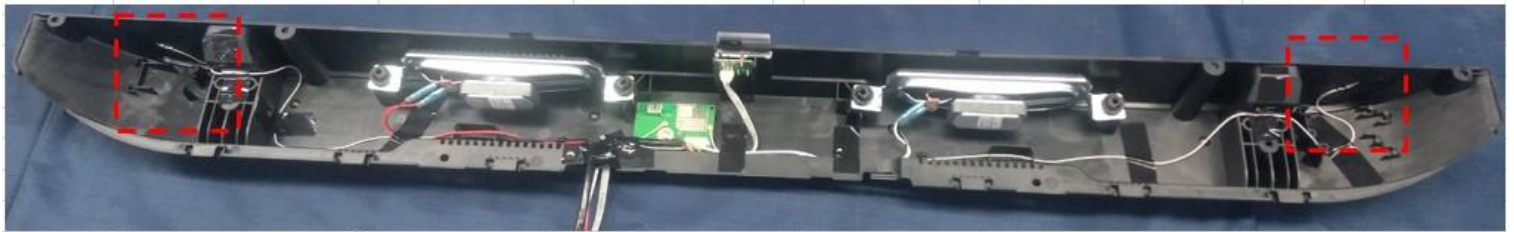
Remove the Main board , the power board and the MEMC from the back plate;



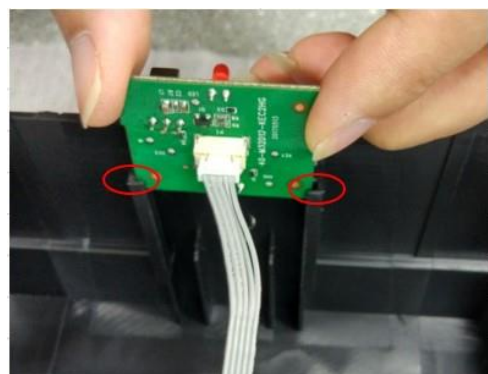
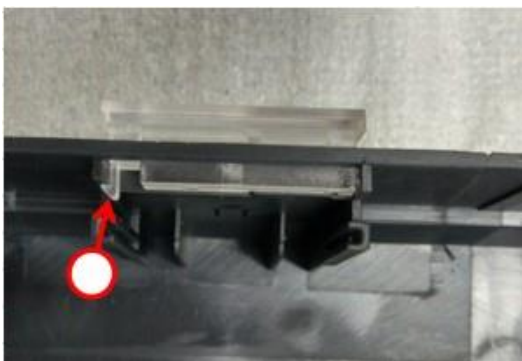


## 9.2.7 Disassemble the wire & Wifi antenna

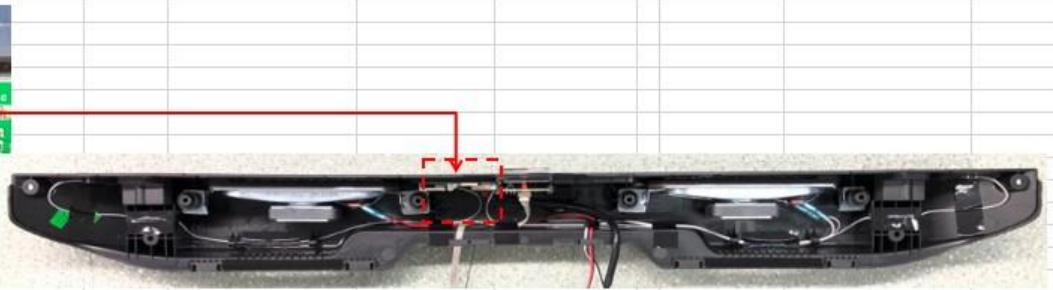
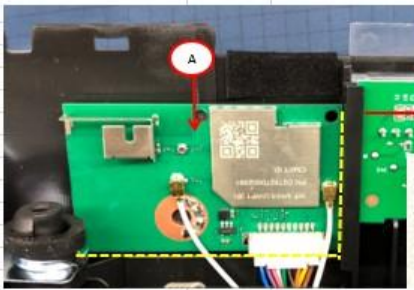
a. Tearing off 7pcs fixed WIFI Antenna



b. The lamp cover and the remote control board are removed from the speaker cover, and then the wire rod is pulled out from the remote control board terminal;



b. Remove the WIFI board and the tapes of the bell cover;



## 9.2.8 Disassemble Accomplished

## 9.3 TV Assemble

### 9.3.1 Assemble Main Board and the Power Board

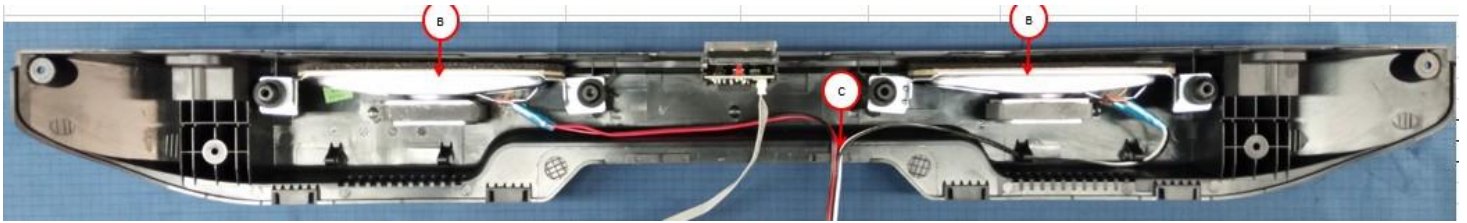
Fixed the main board, power board and MEMC with screws.



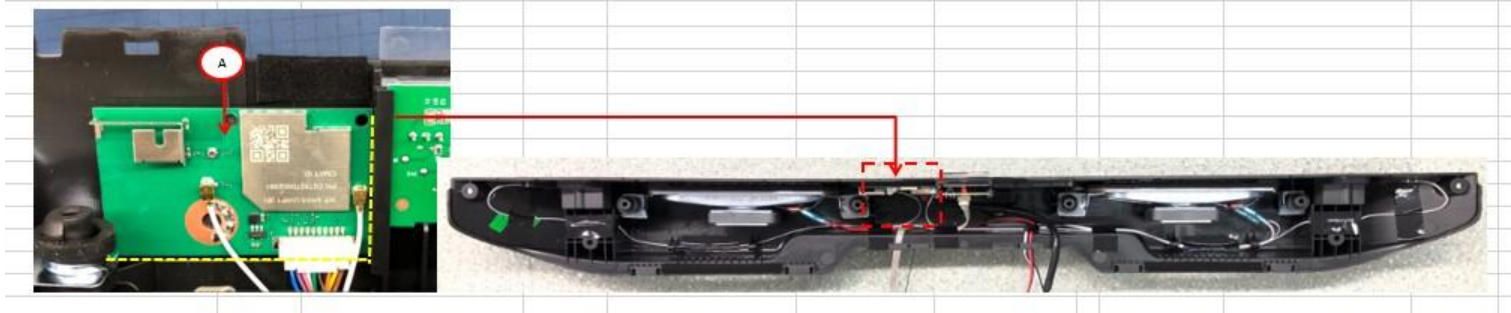
### 9.3.2 Assemble Loudspeaker

Mount the speaker on the rear case





### 9.3.3 Assemble Wifi board and tapes in the horn cover

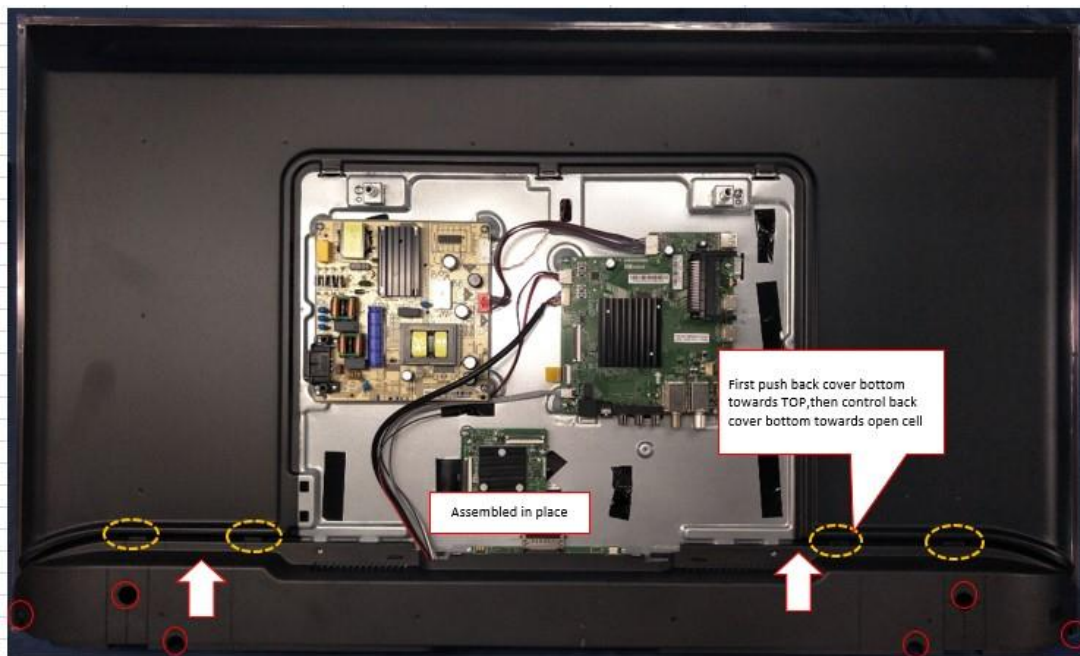


### 9.3.4 Assemble the cable

Connect the interface wires of each part to the main board, power board and MEMC.

### 9.3.5 Assemble the horn cover

**Step 1:** First push back cover bottom towards TOP, then control back cover bottom towards open cell



### 9.3.6 Assemble back shell

Step 1: Check the back shell for scratches, dirt, damage, etc.

Step 2: Align the right side of the rear case with the motherboard interface, and then push the rear case until the screw holes are fully in place.

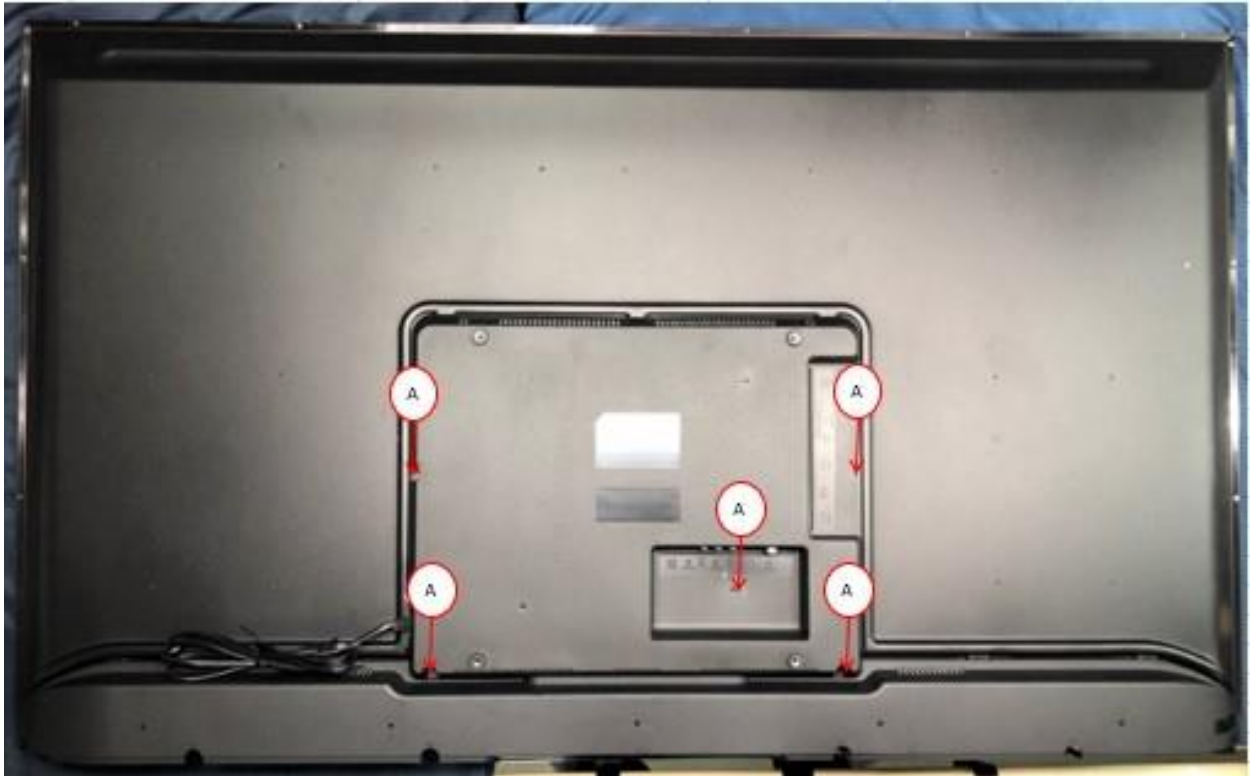


Caution : 1. Screw locks must not be loose, tilted and broken.

2. When the screw is locked, if the screw falls into the machine, it must be cleaned before the machine can be sent out.

### 9.3.7 Locking the back shell

**Step 1:** As shown in the figure, the rear shell screws are vertically locked;



### 9.3.8 Assemble Accomplished

## 9.4 Notes of Disassembly and Assembly

#### 1. Conducting Resin Reuses Regulation

Conducting Resin is seen as malfunction only if it is damaged, uneven, losing stickiness, replace it.

#### 2. Fixing Glue Reuse Regulation

Fixing glue is seen as malfunction only if it lost stickiness, replace it.

#### 3. Cautions for Remove Glue Operation

It is necessary to use appropriate amount of ethyl alcohol to dig residues sufficiently once conducting resin and fixing glues are seen as malfunction. It is necessary to use non-rigid tools aside with dustless cloths to remove residues in case of scratch the surface of components when operating.

#### 4. Cautions for Power off Conditions

It is essential to insure TV is in Power Off status before disassembly and Assembly accomplished, and disconnect all the power input before preparation and accomplishment for relevant operation.

# 10. Wall-mounted Components

Corresponding relation between MiTV Wall-mounted components and Screws

# 11. Defects' Codes

Refer Mi TV Defects' Codes in XMS

# 12 .FAQ

1、 Customer's Question : Why it takes so long time when I first Start Up Mi TV 4A ?

Terminal Answer : Hello, dear MI Fans, Mi TV system will be activated when you start your smart TV for the first time. There will be a duration for MI TV to install internal apps, which will last about 2 to 3 minutes. Therefore, it takes more time than other non- smart TV, Appreciate for waiting so long times but please be more patient.

2、 Customer's Question : How to switch on and off Mi TV 4A ?

Terminal Answer : Hello, dear Mi fans, please allow me to show you the steps of how to switch on and off MI TV 4A.

1) You could press the power key on remoter or keypad on the TV body to switch on TV when you connect power supply to you [TV](#). At this moment, TV is in standby status automatically.

2) You could short press power key to turn TV into standby mode or you could long press power key and keypad on the TV body to switch off [TV](#).It is the Mi TV's complete power off status.

3、 Customer's Question : Does MI TV's LCM has 4K (QFHD)?

Terminal Answer : Hello, dear Mi fans , Mi TV 4A-55-Inch and MI-TV-4A-55-Inch are with 4K LCD, while 32-Inch , 43-Inch and 49-Inch are not with 4K LCD, but with HD 1080p LCD. So you are only able to display video of less than 1080p resolution if you purchased Mi TV 4A-32-Inch, 43-Inch and 49-Inch.

4、 Customer's Question : Can Mi TV make sound if it did not connect to any external loudspeaker?

Terminal Answer : Hello, dear Mi fans. Mi TV can make sound steadily if it did not connect to any loudspeaker because Mi TV is an all-in-one type TV. What you should do is to enter system setup and select Sound to enter Sound Adjusting Menu, then you can choose TV loudspeaker to dominate making sound.

5、 Customer's Question: Does MI TV 4A support 3D function?

Terminal Answer : Hello, dear Mi fans, we regret to inform that Mi TV 4A does not support 3D function.

6、 Customer's Question: Why my Mi TV 4A darker in four corners?

Terminal Answer : Hello, dear Mi fans, there are no LED lights located in four corners of LCD where appearance darker than other parts because Mi TV applied Direct-type

LED technology, which LCD light resources distanced from the TV LCD edge make as much lights as possible to evenly distribute in the screen of LCD by optical technology of scattering LED light resources. It is normal in TV products field, and totally based on National Technical Requirements. Therefore, you can rest assured that it will not affect your entertaining feeling when you enjoy it.

7、 Customer's Question: Why is my Mi TV so thick?

Terminal Answer: Hello, dear Mi fans, the reason for thickness is technical limits. Mi TV 4A applied Direct-type LED technology, which hardware parts of this technology requires a reasonable distance to make light evenly distribute in the screen of LCD. So a necessary distance is obviously essential.

8、 Customer's Question: What are characters of Direct-type LED Technology?

Terminal Answer: Hello, dear Mi fans, MI TV applied Direct-type LED technology are slight thicker than the ones applied Edge Emitting LED because hardware of Mi TV applied DLED need a longer distance for layout. But Mi TV applied DLED come cross heating concentrated in part of LCD which happened in DLED TV , better in color range and natural view as well.

9、 Customer's Question: Why I am not able to fix pedestal of MI TV 43-Inch?

Terminal Answer: Hello, dear Mi fans, you have encountered this situation probably you fixed up the incorrect side of pedestal. There are an obvious sign on the joint position between pedestal and TV body. L represent Left, while R is for Right, which are comfort for qualified installation person. You could try to exchange places of this two pedestals.

10 : Customer's Question: Whether my Mi TV 4A support Thunder Stone KTV professional wireless microphone?

Terminal Answer : Hello, dear Mi fans, we regret to inform that Mi TV 4A does not support thunder Stone KTV professional wireless microphone. Support USB3.0. All USB ports are 2.0 type.

12、 Customer's Question: What are the problems about displaying Red/Green/Blue screen when I switch on my Mi TV 4A?

Terminal Answer : Hello, dear Mi fans, sorry for taking you so much troubles. This phenomenon is not caused by TV quality issues or TV function issues. It is only resulted from inappropriate matching TV signals. Reset TV and make sure it is in latest system version, all will be recovered.