



Ninebot eKickScooter **ZING A6** User Manual



Изображение носит исключительно иллюстративный характер. Фактическое изделие может отличаться.

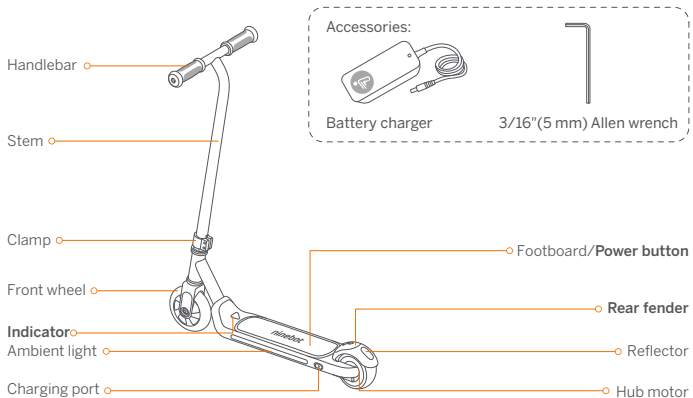
CE.00.0052.13-B

ninebot®

To reduce the risk of injury, adult supervision is required. Before your first ride, for your safety there is a speed limit on the device. The initial speed is limited to 3.1 mph (5 km/h) with the indicator light flashing and a buzzer warning sound. Please be sure to scan the QR code on the kick scooter to learn how to fully activate it. Please read the User Manual carefully and understand the assembly and usage before allowing a child to ride it. Please do not discard this manual as it is a permanent part of this product.

Thanks for choosing the Ninebot eKickScooter (referred to as the kick scooter in this manual)! The kick scooter is specially designed for smooth and safe riding. It combines the power of electricity and the style of a traditional kick scooter. Enjoy an effortless gliding experience on this cool kick scooter.

1. Parts and Functions



Power button:

Place a single foot on the footboard to start the kick scooter, then you will hear one beep as the prompt. Take both feet off the footboard for 30 seconds and the kick scooter will automatically power off.

Rear fender:

- **Switch speed mode:** In the power-on state, when the kick scooter is still, step the rear fender twice to switch the speed mode.
- **Brake:** When riding, step on the rear fender to brake.

Indicator

The color of the indicator shows the battery level or abnormality.

Battery level	≥ 10%	< 10%	Not activated or abnormality alert
Indicator color	white	red	red

Note: When the battery level is below 10%, the indicator will stop flashing and the speed is capped at 5.0 mph (8 km/h).

The flashing way of the indicator shows different speed mode.

Speed mode	First-gear speed	Second-gear speed
Max. speed	5.0 mph (8 km/h)	6.2 mph (10 km/h)
Indicator	solid, with 1 beep	blink slowly, with 2 beeps

Prompt Indication

State	Prompt
Not activated	3 short beeps
Battery temperature too high	2 short beeps and 1 long beep
Battery temperature too low	2 short beeps and 2 long beeps
Speed > 6.2 mph (10 km/h)	2 long beeps
Battery level: < 10%	2 short beeps
Pull out and plug in the charger	1 short beep
Power on	1 short beep
Power off	1 long beep

2. Riding Safety

- 1 The product is for recreation only. It is not intended for transportation. Do not modify the kick scooter in any way to change the purpose for which it was designed. In order to master riding skills, the rider needs to practice. Use with caution since skill is required to avoid falls or collisions causing injury to the user or third parties.
- 2 Ninebot parties are not responsible for any injuries, damages or legal disputes caused by a rider's inexperience or failure to follow the instructions in this manual.
- 3 Remember that whenever you ride the kick scooter, you risk injury from loss of control, collisions, and falls. To reduce the risk, you must read and follow all "CAUTION" and "⚠️ WARNING" notices. Please understand that you can reduce the risk by following the instructions and warnings in this manual, but you cannot eliminate all the risks. Please use common sense when riding.
- 4 The assembly and adjustment should ONLY be done by adults. The kick scooter contains small parts which can pose a choking hazard. To avoid suffocation, do not allow children to touch plastic covering. Children must always be under parental supervision. Children under the age of 4 must be kept away from the product.
- 5 DO NOT allow anyone to ride the kick scooter on his/her own unless the supervising adults, have carefully read this manual. It is the supervising adult's responsibility to assure the new rider's safety. Assist new riders until they are familiar with the basic operation of the kick scooter. The rider must wear a helmet and other protective gear. When you give the product to others, please deliver the User Manual together.

⚠️ WARNING

Protective equipment should be worn. Not to be used in traffic. Never hitch a ride with another vehicle. DO NOT ride in rain or through puddles. Not for children with a body mass of more than 40 kg.

Riding Surfaces and Environment:

- This kick scooter is designed for riding on flat, dry, paved surfaces. Please ride in an open outdoor space. Make sure there are no children, pedestrians, pets, skateboards, bikes, kick scooters, other

riders or potential obstacles in your surroundings.

- Never use in roadways, near motor vehicles, near steep inclines or steps, swimming pools or other bodies of water. Avoid construction sites, sudden surface changes, drainage grates, potholes, cracks, hydrants, parked cars, speed bumps and other obstacles. Don't ride on loose grounds (such as rocks, gravel or sand).
- Do not ride in extreme temperature conditions or in low visibility, such as at dawn/dusk or at night. Do not ride in the snow or in the rain. Submersion in water may cause battery damage, catch fire or even explode.

⚠️ WARNING

If the kick scooter makes an abnormal sound or signals an alarm, stop riding immediately. When riding, keep your hands on the handlebar at ALL TIMES and DO NOT ride with one hand or one foot.

Before riding:

To avoid accidental injuries, the rider's guardian should check the following matters before each ride:

- Vehicle body and tire state, etc. Ensure that any part including handlebar, stem, rear fender, screws are not loose or damaged.
- Battery power: When the indicator light turns red, it means the kick scooter does not have enough power to maintain normal riding. Please charge in time to avoid possible danger.

When Riding:

- One rider ONLY!
- Always wear a helmet and other protective gear (such as elbow pads and knee pads) when riding the kick scooter. Use an approved bicycle or skateboard helmet that fits properly with the chin strap in place, and provides protection for the back of your head.
- DO NOT bypass. Slow down when entering unfamiliar areas. Use caution when riding in areas with trees, posts, or fences. Always slow down when turning.
- Be alert and aware of the surroundings both far ahead and in front of you when riding. Your eyes are your best tool for safely avoiding obstacles and low traction surfaces (including, but not

limited to, wet ground, loose sand, loose gravel, and ice).

- Avoid sudden acceleration and deceleration. Never ride faster than the designed top speed (the top speed can be affected by rider weight, battery level, incline, etc.). As with other vehicles, faster speeds require longer braking distance. Sudden braking on low traction surfaces could lead to wheel slip or falls. Be cautious and always keep a safe distance between you and others when riding.
- Keep both hands on the handlebar and do not carry cargo of any kind. DO NOT use a cell phone, camera, headphones, earbuds or perform any other activities while riding. DO NOT ride downhill.
- Do not touch moving or spinning wheels. Keep your hair, clothing, or similar articles from coming in contact with the moving parts.
- Please get off the kick scooter and walk along with it when you encounter special road surfaces such as speed bumps and potholes.

Who Should Not Ride:

- I. Anyone under the influence of alcohol, drugs, or intoxicants.
- II. Anyone who suffers from diseases (especially in the head, heart, back and neck) that put them at risk if they engage in strenuous physical activity.
- III. Anyone who has a health condition that would interfere with their ability to maintain balance.
- IV. Anyone whose age, height and weight is outside the stated limits (see *Specifications*).
- V. Those with compromised mental abilities who cannot understand the risks and proper operation of the vehicle.

Safe Use:

- Do not ride the kick scooter when the ambient temperature exceeds the operating temperature of the product (see *Specifications*), because low/high temperatures can decrease vehicle performance and even lead to accidents.
- Always park with the kickstand on a flat and stable surface. Once the kick scooter is on its stand, check its stability to avoid any risk of falling (by slip, wind or slight jolt). Do not park in a busy area,

but rather along a wall.

- It is recommended to conduct regular maintenance of the kick scooter (see *Maintenance*).
- Please read the User Manual before charging the battery (see *How to Charge*).

WARNING

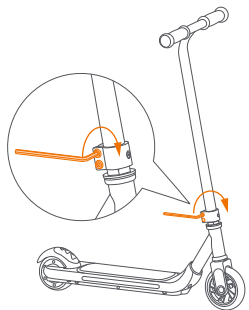
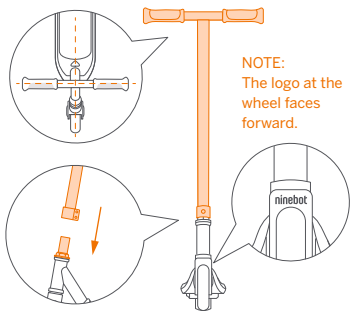
- Only use the original charger. Do not charge when the battery is wet or damaged.
- Never allow your child to touch any vehicle parts with gaps such as rear fender, wheels, etc. Do not touch the brake or hub motor after riding, so as to avoid burns due to increased temperature.

3. Assembly and Activation

⚠ WARNING

Please check to make sure the kick scooter is powered off before assembly.

- 1 Insert the stem to the bottom and adjust the handlebar direction to be perpendicular to the front wheel.
- 2 Tighten the two screws on the clamp to make sure it is securely installed.



Activation

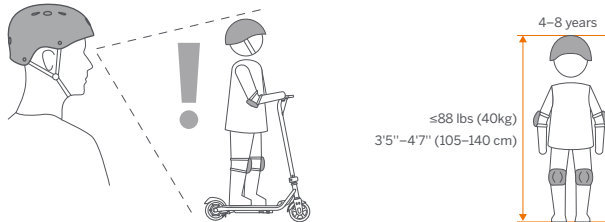
Please scan the QR code to learn how to activate the vehicle before riding, otherwise the vehicle speed will be limited to 3.1 mph (5km/h).

4. Learn to Ride

* When the indicator light turns red, please charge immediately.

⚠ WARNING

Always wear a helmet and other protective gear to minimize any possible injury in the learning process. To reduce the risk of injury, adult supervision is required.



- 1 Start up: Place a single foot on the footboard to start the kick scooter, then you will hear one beep as the prompt.
- 2 Cruise: Hold the handlebar firmly with both hands and kick to start up. During the cruising, place both feet on the footboard and keep your balance.



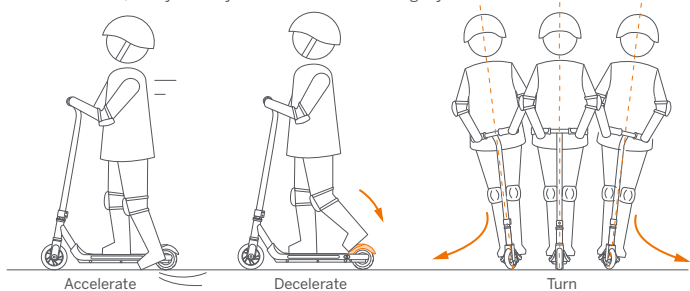
Switch Speed Mode

In the power-on state, when the kick scooter is still, you can step on the rear fender twice to switch the speed mode.

Note:

For your safety, the hub motor will not start if the speed is less than 1.2 mph (2 km/h).

- 3 Accelerate and decelerate: Within 6.2 mph (10 km/h), continuously kick to accelerate. Step on the rear fender to brake.
- 4 Turn: To turn, shift your body and turn the handlebar slightly.



⚠ WARNING

Stay alert and avoid abrupt acceleration or deceleration. Otherwise you risk serious injury due to imbalance, loss of traction and falls. DO NOT perform stunts of any kind. Both tires must remain on the ground at all times.



- 5 Get off: When the kick scooter has stopped cruising, step off one foot at a time. Be extra cautious when dismounting for the first time. Take both feet off the footboard for 30 seconds and with kick scooter will automatically power off.

⚠ WARNING

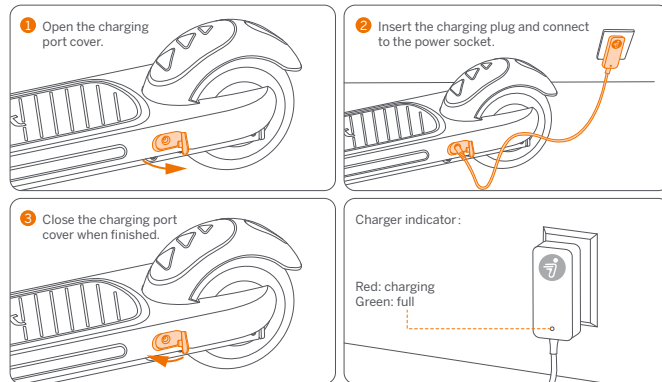
Stay calm and DO NOT jump off the kick scooter. DO NOT touch the hub motor to avoid scald.

5. How to Charge

CAUTION

The charger is not a toy. Children should not be allowed to touch the charging device, the supervising adult needs to handle charging. Before and during charging, make sure the kick scooter is turned off.

Charging steps



⚠ WARNING

- Use only the charger specified by the manufacturer. Other types can burst and catch fire.
- Do not attempt to charge your kick scooter if the charger or the power outlet is wet.
- When there is abnormal smell, sound or light display, stop charging immediately and contact after-sales service.
- Keep away from flammable and explosive materials when charging, and place the kick scooter in a place out of the reach of children.
- When not charging, disconnect the charger from the power socket.

6. Specifications

	Item	Ninebot eKickScooter ZING A6
Weight and Size	Net Weight	Approx. 10.1 lbs (4.6 kg)
	Length x Width x Height	Approx. 25.6 x 12.6 x 33.5 inch (650 x 320 x 850 mm)
Rider Requirement	Max. Payload	88 lbs (40 kg)
	Recommended Age	4-8 yrs.
	Recommended Height	3'5"-4'7" (105-140 cm)
Vehicle Parameters	Speed Mode (Max Speed)	First-gear speed: 5.0 mph (8 km/h), second-gear speed: 6.2 mph (10km/h)
	Typical range ^[1]	Approx. 3.1 miles (5 km)
	Traversable Terrain	Flat surface, paved road; obstacles < 0.4 in (1 cm); gaps < 0.4 in (1 cm)
	Operating Temperature	14-104°F (-10-40°C)
	Storage Temperature	-4-122°F (-20-50°C); 41-86°F (5-30°C) recommended
	IP Rating	IPX4
	Charging Time	Approx. 3 h
Battery Pack	Battery Type	Lithium-ion battery
	Nominal Voltage	10.8 V ---
	Maximum Voltage	12.6 V ---
	Charging Temperature	32-113°F (0-45°C); 50-95°F (10-35°C) recommended
	Nominal Capacity / Energy	2500 mAh/27 Wh
Motor	Battery Management System	Over-heating, short circuit, over-current and over-charge protection
	Nominal Power	50 W
Battery Charger	Max. Power	80 W (0.08 kW)
	Input Voltage	100-240V-
	Rated Output	11.6 V --- , 1.0 A
	Output Power	11.6 W (0.01 kW)
Others	Braking Method	Rear-fender brake
	Tires	Front wheel: PU perfusion, Rear wheel: Rubber solid
	Frame Material	Steel
	Overcurrent protection value	7.5 A
	Handlebar Material	TPR

[1] Typical range: tested while riding with a full battery, 61 lbs (30 kg) load, 77°F (25°C), 60% of max. speed on average on pavement.

* For the first ride, the default speed mode is the first-gear mode. When the kick scooter powers off, the speed mode setting will be kept till the next time you turn it on.

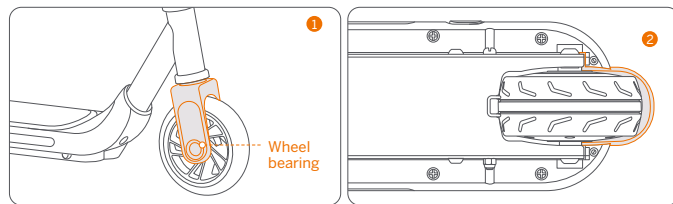
7. Maintenance

Maintenance should be carried out by an adult regularly.

Cleaning

Use a soft and wet cloth to clean. Stains hard to remove can be scrubbed with a toothbrush and toothpaste, then wiped off with a soft and wet cloth.

To prevent jamming to the wheels, wheel bearings, or brakes, please clean and check these areas (as shown in the gray highlighted areas below) for dirt and other foreign objects.



First clean up the foreign objects, and then wipe clean with a soft wet cloth. Lubricate both sides of the bearing with lubricating oil or machine oil. If the problem still exists, please contact customer service. **CAUTION:** To avoid the accumulation of foreign objects, DO not ride on muddy, dusty, grassy or slippery roads. Do not clean your kick scooter with alcohol, gasoline, acetone, or other corrosive/volatile solvents. These substances may damage the appearance and internal structure of your kick scooter. Do not wash your kick scooter with a power washer or hose.

⚠ WARNING

- Do not dispose of this product in a landfill, by incineration, or by mixing with household trash. Serious danger/injury can occur because of the electrical components.
- Before cleaning, Please check to make sure the kick scooter is powered off, the power cord is unplugged, and the rubber cap on the charging port is tightly sealed; otherwise you may damage the electrical components.

Storage

Before storage, Please check to make sure the kick scooter is powered off and fully charge it to avoid over-discharge, which will cause permanent damage. Charge the kick scooter every 30 days for long-time storage. Store in a cool and dry place indoors. Exposure to sunlight and temperature extremes (both hot and cold) will accelerate the aging process of the vehicle components and may permanently damage the battery. If the temperature of the storage environment is lower than 32°F (0°C), do not charge it until after placing it in a warm environment, preferably over 50°F (10°C).

WARNING

- Prolonged exposure to UV rays, rain and the elements may damage the enclosed materials.
- Store indoors when not in use.
- Keep away from fire!

Battery

A well-maintained battery can perform well even after many miles of riding. Charge the battery after each ride and avoid draining the battery. When at 72°F (22°C), the battery performance is at its best and the vehicle can achieve a longer range. Electronics inside the battery record the charge-discharge condition of the battery; damage caused by over-charging or over-discharge will not be covered by the Limited Warranty.

WARNING

- For information about battery and electrical waste, please contact your household waste disposal service, your local or regional waste management office, or your point-of-sale.
- The battery is not replaceable. Do not attempt to replace or disassemble the battery. Do not dismantle or puncture the casing. Keep away from metal objects to prevent short circuit.
- Risk of fire and electric shock. No user serviceable parts.
- Do not store or charge the battery at temperatures outside the stated limits (see Specifications).
- Never charge in areas forbidden by law.

Battery Charger

Regularly examine the charger for damage to the cord, plug, enclosure and other parts. If any

damage is found, stop using until it is repaired or replaced.

WARNING

Risk of electric shock. Do not disassemble the case or touch the metal contacts. Charge Li-ion batteries ONLY!

Others

- Before lifting, moving, or otherwise transporting the kick scooter, please turn it off. Handle with care and avoid violent force, such as throwing and heavy pressure. Keep away from fire and water.
- Tires supplied with the product are to be mounted on the wheel by a professional repairer. Removing the wheels is complicated and incorrect assembly can lead to instability and malfunctions.

In case of accidents or breakdown, contact an authorized repairer if the product is still under warranty. If it's not, you can contact any specialized repairer of your choice. You can ask for the list of the authorized repairers from customer service available at www.segway.com.

Efforts have been made to simplify wording in the user manual for users. Where an action appears too complicated for a user, he/she is advised to contact an authorized or a specialized repairer or customer service.

NOTICE: INSURANCE

YOUR INSURANCE POLICIES MAY NOT PROVIDE COVERAGE FOR ACCIDENTS INVOLVING THE USE OF THIS KICKSCOOTER. TO DETERMINE IF COVERAGE IS PROVIDED, PLEASE CONTACT YOUR INSURANCE COMPANY OR AGENT.

8. Certifications

For Model: ZING A6

The battery complies with UN/DOT 38.3.

European Union Compliance Statement

Important WEEE information



WEEE Disposal and Recycling Information Correct Disposal of this product. This marking indicates that this product should not be disposal with other household wastes throughout the EU.

To prevent possible harm to the environment or human health from uncontrolled waste disposal, recycle it responsibly to promote the sustainable reuse of materials resources. To return your used device, please use the return and collection systems or contact the retailer where the product was purchased. They can take this product for environmental safe recycling.

Battery recycling information for the European Union



Batteries or packaging for batteries are labeled in accordance with European Directive 2006/66/EC and amendment

2013/56/EU concerning batteries and accumulators and waste batteries and accumulators. The Directive determines the framework for the return and recycling of used batteries and accumulators as applicable throughout the European Union. This label is applied to various batteries to indicate that the battery is not to be thrown away, but rather reclaimed upon end of life per this Directive.

In accordance with the European Directive 2006/66/EC and amendment 2013/56/EU, batteries and accumulators are labeled to indicate that they are to be collected separately and recycled at end of life. The label on the battery may also include a chemical symbol for the metal concerned in the battery (Pb for lead, Hg for mercury, and Cd for cadmium). Users of batteries and accumulators

must not dispose of batteries and accumulators as unsorted municipal waste, but use the collection framework available to customers for the return, recycling, and treatment of batteries and accumulators. Customer participation is important to minimize any potential effects of batteries and accumulators on the environment and human health due to the potential presence of hazardous substances.

Before placing electrical and electronic equipment (EEE) in the waste collection stream or in waste collection facilities, the end user of equipment containing batteries and/or accumulators must remove those batteries and accumulators for separate collection.

Restriction of Hazardous Substances (RoHS) Directive

This Ninebot (Changzhou) Tech Co., Ltd. product, with included parts (cables, cords, and so on) meets the requirements of Directive 2011/65/EU on the restriction of the use of certain hazardous substances in electrical and electronic equipment ("RoHS recast" or "RoHS 2.0").

Electromagnetic Compatibility

Ninebot (Changzhou) Tech Co., Ltd. declares that the equipment listed in this section are in compliance with the essential requirements and other relevant provisions of the Electromagnetic Compatibility 2014/30/EU.

The declaration of conformity can be viewed at the following address:
<http://eu-en.segway.com/support-instructions>



Hereby, Ninebot (Changzhou) Tech Co., Ltd. hereby declares that this device complies with the essential requirements and other relevant provisions of the Electromagnetic Compatibility 2014/30/EU and the RoHS Directive 2011/65/EU.

9. Trademark and Legal Statements

Ninebot is the registered trademark of Ninebot (Tianjin) Tech. Co., Ltd; Segway and the Rider Design are the registered trademarks of Segway Inc.; The respective owners reserve the rights of their trademarks referred to in this manual.

We have attempted to include description and instructions for all the functions of the Ninebot eKickScooter at the time of printing. However, due to constant improvement of product features and changes of design, your scooter may differ slightly from the one shown in this document. Visit www.segway.com to download the latest user materials.

Please note that there are multiple Segway and Ninebot models with different functions, and some of the functions mentioned herein may not applicable to your unit. The manufacturer reserves the right to change the design and functionality of the scooter product and documentation without prior notice.

©2021 Ninebot (Beijing) Tech Co., Ltd. All rights reserved.

Legal Statement

IMPORTANT: Ninebot eKickScooter (the "product") is an off road product rather than a means for transportation. Be aware, the user shall agree to read the entire user manual and fully understand its content (especially the parts related to the safety riding).

The "Ninebot parties" mentioned above and below is the Manufacture ("Ninebot"), Segway Inc. ("Segway") and their affiliates (including but not limited to their parent company, subsidiary, affiliated companies, predecessor, subsequent company, administrators, successors, assigns, officers, directors, managers, employees, members, shareholders, and agents, attorneys, insurers).

1. This product can be dangerous to a user, other persons, and property in proximity to that. The user shall assume all the risks and losses in connection with the product (especially for those related to and/or arising out of violation of the instructions about warnings and caution statements). Such risks include but not limited to loss of control, failure of the product, and/or collision). The consequences for such an incident can be severe, including but not limited to injuries, bodily injuries, death, and/or damages to property. Ninebot parties shall not be liable for any claim, liability, and loss related to such consequences if it is due to the user's assumption of risk.

2. The product is a means of entertainment and play. The user may not have the necessary and sufficient experience and skills to ride it, especially in complex environments and/or undesirable road. Such risk may increase if the user has physical and/or mental impairment or disability. Such risk may also increase if the user is not sufficiently familiar with the functions, features and performance of the product. Thus, new users shall learn and practice how to use this product properly and safely.
3. The user shall regularly and periodically, as the circumstance requires, inspect and maintain the product. The user shall also conduct reasonable examination and inspection of the product every time before riding it. For instance, every time before riding the product, the user shall check and examine tire performance, battery level, and all functional parts. If abnormality, discoloration or change of color of material (especially in an area that receives high stress when the product is in motion or junction), scratch, crack, loose fasteners, and/or missing parts (such as screw, bolts and/or nut) which strongly indicates that it is not safe to ride the product.
4. Since it is impossible to predict and/or anticipate all and every scenario, condition, and/or circumstances under which a product user may be exposed to risk and danger, the User Manual is not intended to be an exhaustive list on how to ride the product safely and/or avoid hazards related to the product. So, in addition, to adhere to the instructions, the user shall also ride and/or use the product with responsibility, carefulness, precaution, and best judgment.
5. The users shall check and obey the local laws or regulations over the product. The laws and regulations may be different in different jurisdictions. Apart from the others, such laws and regulations may include:
 - a. A helmet may be legally required by local law or regulation in your jurisdiction.
 - b. Your product is not be allowed to be driven on a motorway or highway.
 - c. You may obtain more information related to legal requirements on the product from your local government.
6. The users shall immediately check whether the product and its accessories are in good condition upon receipt of the product.
7. All the separate components and parts of the products must be properly installed per the User Manual. Inappropriate installation and/or assembly may significantly increase the risk of loss of control, product failure, collisions, and falls. The product may contain removable components and small parts. Please keep them out of the reach of children to avoid choking hazards.
8. Do not dispose of this product in a landfill, by incineration, or by mixing with household trash.

Serious danger/ injury can occur because of the electrical components and the battery. For information about battery and electrical waste, please contact your household waste disposal service, your local or regional waste management office, or your point-of-sale. The user shall not use any non-original accessories or dismantle or modify the product without authorization. All damages, injuries, and damages to property arising from that place will be your sole responsibility and risk.

9. Ninebot parties reserves the right to make changes to the product, release firmware updates, and update this manual at any time. Ninebot parties may make improvements and changes to this user manual necessitated by typographical errors, inaccuracies of current information, or modifications to programs and/or equipment at any time and without notice. Such changes will, however, be incorporated into new editions of this user manual. All illustrations are for illustration purposes only and may not accurately depict the actual device. Actual product and functions may vary. Due to the update of the product, there may be some deviations in color, appearance, and other aspects between the product listed in this manual and the product you purchased. Please refer to the actual product.
10. This document should be considered as a permanent part of the product, and it shall be provided to the user together with the product all the time.

Thank you again for choosing Ninebot eKickScooter!

10. Contact

Contact us if you experience issues relating to riding, maintenance and safety, or errors/faults with your scooter.

Asia Pacific

China Mainland: Ninebot (Beijing) Tech Co., Ltd.

Room B201, B202, B6 Bldg. Zhongguancun Dongsheng Technology Park (Northern Territory), No. 66,

Xixiaokou Rd,

Haidian Dist., Beijing, China.

Tel: 400-607-0001/86-10-8482-8002

E-mail: apac_sales@ninebot.com

South Korea: Segwayseoul Inc.

Room 605-606.80, Jomaru-ro 385beon-gil, Bucheon-si, Gyeonggi-do, Republic of Korea.

Tel: 82-70-4068-8002

E-mail: korea-service@ninebot.com

Have your scooter serial number on hand when contacting Ninebot parties.

You can find the serial number on the underside of your scooter.