

Mi Smart Standing Fan 2 User Manual



Safety Instructions

Read this manual carefully before use, and retain it for future reference.

WARNINGS

Improper use may lead to electric shocks, fire, personal injury, or other damage.

- ⊗ This appliance can be used by children aged from 8 years and above and persons with reduced physical, sensory or mental capabilities or lack of experience and knowledge if they have been given supervision or instruction concerning use of the appliance in a safe way and understand the hazards involved. Children shall not play with the appliance. Cleaning and user maintenance shall not be made by children without supervision. (For European countries or regions)
- ⊗ This appliance is not intended for use by persons (including children) with reduced physical, sensory or mental capabilities, or lack of experience and knowledge, unless they have been given supervision or instruction concerning use of the appliance by a person responsible for their safety. Children should be supervised to ensure that they do not play with the appliance. (For no European countries or regions)
- ⊗ Children should be supervised to ensure that they do not play with the appliance.
- ⊗ Do not use this fan in a place where it will easily fall over or where there are other unstable objects nearby.
- ⊗ Do not use this fan in hot and humid environments such as a bathroom.
- ⊗ Do not use this fan if its power cord is damaged or its power plug is loose.
- ⊗ Do not use this fan if its front grille is not installed, or its rear grille is loose or fell off.
- ⊗ Do not allow children or adults who are incapable of operating this fan to use this product.
- ⊗ Do not attempt to disassemble or repair this fan by yourself.
- ⊗ Do not excessively pinch, bend, or twist the power cord to prevent from exposing or breaking its core.
- ⊗ Do not insert your fingers or any object into the front grille, rear grille, or the fan blades when the fan is in use.
- ⊗ Keep hair and fabrics away from the fan to avoid getting them caught in the fan.
- ⊗ Do not use any improper power outlet.
- ⊗ Do not use the power cord provided with this fan for any other device.
- ⊗ Make sure the fan is disconnected from the electrical outlet before removing the grille.

Safety Instructions

Read this manual carefully before use, and retain it for future reference.

- ⊗ When maintaining and cleaning, disassemble the fan base before removing other parts. Make sure you install the fan base last when assembling the fan.
- ⊗ Under normal use of condition, this equipment should be kept a separation distance of at least 20cm between the antenna and the body of the user.
- ⊗ Ensure that the fan is switched off from the supply mains before removing the guard.
- ⊗ If the supply cord is damaged, it must be replaced by a special cord or assembly available from the manufacturer or its service agent.
- ⊗ Do not strike, crush, and drop the product, or expose it to pressure.
- ⊗ Keep the product away from water and heat sources.
- ⊗ Do not use this product in environments where the temperatures and humidity are extremely high. Avoid direct sunlight.

PRECAUTIONS

Installation

- ⚠ To avoid electric shocks, fire, personal injury, or other damage, please strictly follow the installation steps instructed by the user manual, and make sure the fan base is assembled in the last step.
- ⚠ Do not connect the fan to the electrical outlet until it is fully assembled.

Transportation

- ⚠ Turn off and unplug the fan before moving it.
- ⚠ Firmly hold the fan stand to avoid it from falling down and causing personal injury.

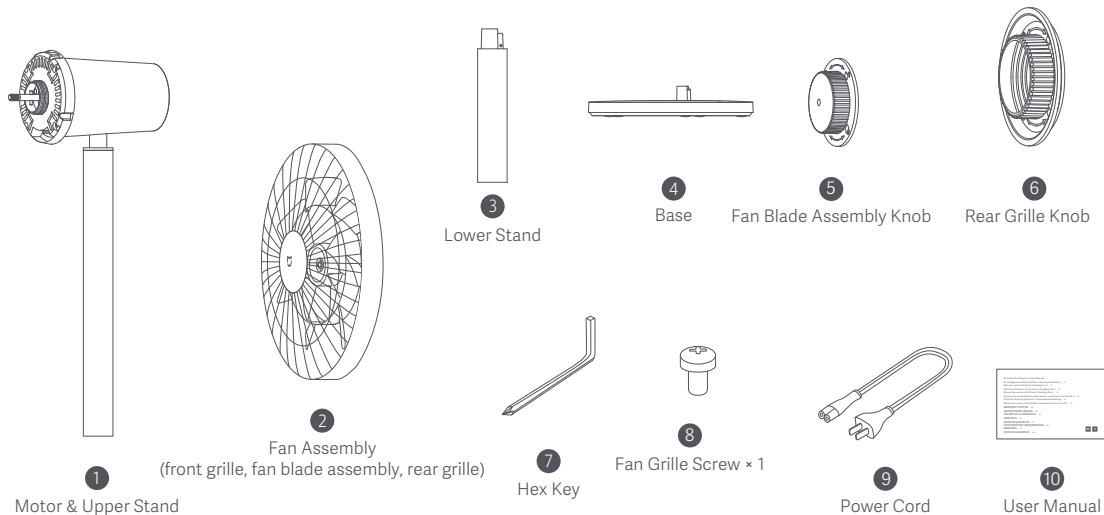
Using the Fan

- ⚠ Immediately stop using the fan if it makes unusual sounds, gives off bad odors, overheats, or rotates irregularly.
- ⚠ Do not lean on or tilt the fan while it is running.
- ⚠ Do not shake the fan's head repeatedly so as to avoid damage to the internal mechanism.

Power Cord

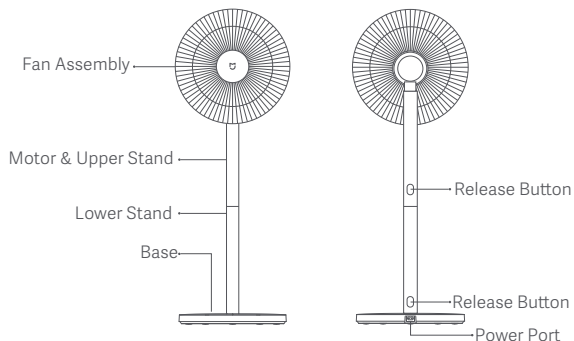
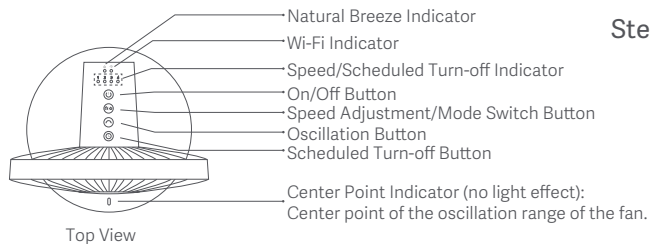
- ⚠ Disconnect the fan from the electrical outlet before doing maintenance or moving it.
- ⚠ Always unplug the fan by pulling the power plug rather than the cord.
- ⚠ When the power cord is damaged, it must be replaced with a genuine one purchased from the manufacturer or after-sales service department.

Package Contents



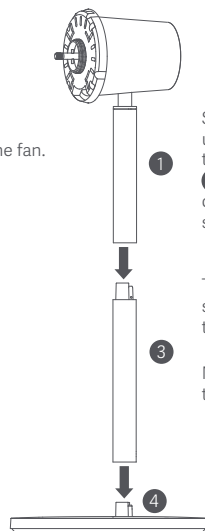
Note: Illustrations of the product, accessories, and user interface in the user manual are for reference purposes only. The actual product and functions may vary due to product enhancements.

Product Overview



Installation

Step 1: Install the fan base



Standing fan mode: Connect ① motor & upper stand to the ③ lower stand, and then connect ③ lower stand to the ④ base, as illustrated. Once you hear a click, the parts have been installed successfully.

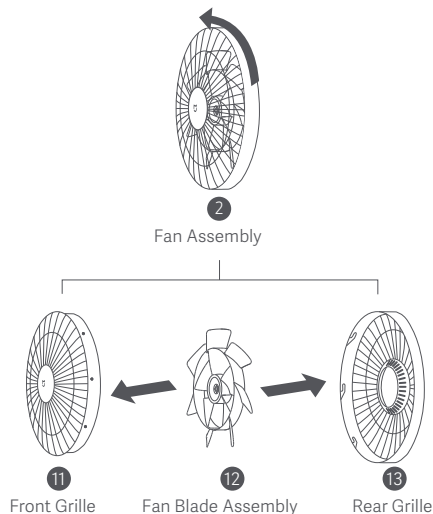
Table fan mode: Connect ① motor & upper stand to the ④ base. Once you hear a click, the parts have been installed successfully.

Note: Press the release button to remove the lower stand.

Installation

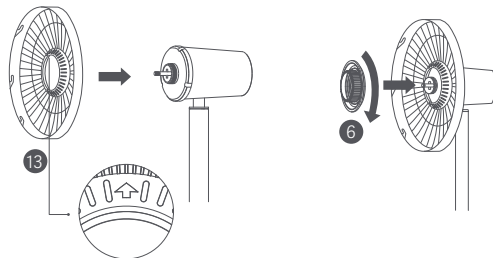
Step 2: Open the fan assembly

Turn the ⑪ front grille counterclockwise until it separates from the ⑬ rear grille. Remove the front and rear grille, then take out the ⑫ fan blade assembly.



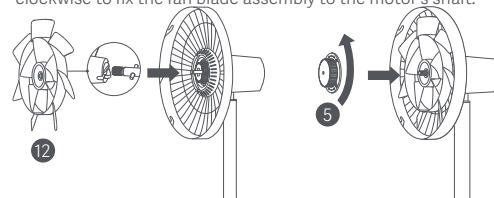
Step 3: Install the rear grille

Install the ⑬ rear grille onto the motor with "↑" facing upwards, and then install and turn the ⑥ rear grille knob clockwise to firmly fix the rear grille to the shaft of the motor.



Step 4: Install the fan blade assembly

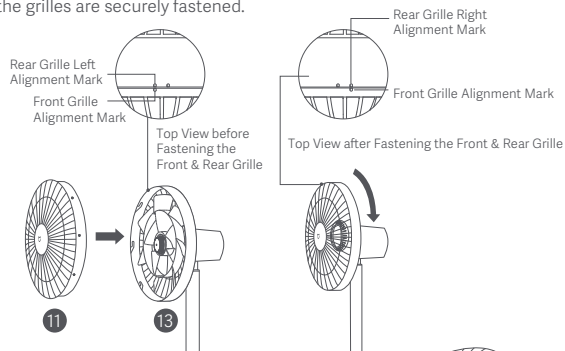
Align the center hole of the ⑫ fan blade assembly with the motor's shaft to install it into position, then install the ⑤ fan blade assembly knob onto the motor's shaft. Turn the knob counterclockwise to fix the fan blade assembly to the motor's shaft.



Installation

Step 5: Install the front grille

Align the front grille alignment mark with the rear grille left alignment mark, and make sure the ⑪ front grille is properly embedded into the ⑬ rear grille. Turn the front grille clockwise until the front grille alignment mark aligns the rear grille right alignment mark. Make sure the grilles are securely fastened.



Step 6: Fasten the front grille

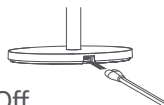
Insert ⑧ fan grille screw into the hole at the bottom of the fan grille. Turn the screw clockwise by using the included ⑦ hex key to tighten it.



How to Use


Connecting to an electrical outlet

Connect the power cord to the power port on the base and then plug it into an electrical outlet. When you hear a beep, the fan is successfully connected to the power supply.




Turning On/Off

Turning On


Press the button  to start the fan. When turned on for the first time, the default speed is slow (1) and the mode is direct breeze.

Turning Off

Press the button  to stop the fan while it is running.

Switching Speed/Mode

Switching Speed


Press the button  to adjust the speed, and the corresponding indicators will light up (see table below). After the fan is turned off and turned back on again, the speed will be the last used one.

Speed	Slow (1)	Medium (2)	Fast (3)	Turbo (4)
Indicator	● ● ● ●	● ● ● ● ● ●	● ● ● ● ● ● ● ●	● ● ● ● ● ● ● ● ● ●


Note: ● means the indicator is on; ● means the indicator is off.

How to Use

Switching Mode


Press and hold the button  to switch between direct breeze and natural breeze. The indicator is off while in direct breeze mode and is on while in natural breeze mode. After the fan is turned off and turned back on again, the mode will be the last used one.

Enable/Disable Oscillation

Press the button  to enable or disable oscillation. You can set the oscillation angle range in the app. After the fan is turned off and turned back on again, the oscillation setting will be the last used one. Unplug then plug the fan in or reset the Wi-Fi connection, then turn on the fan. It will automatically oscillate its angle if enabling the oscillation function. The oscillation time varies depending on different angles, please wait with patience.

Note: When the Wi-Fi connection is reset, the oscillation angle range will change to the default angle of 90°.

Scheduled Turn-off

Press the button  to cycle through the scheduled turn-off times: 1 hour, 2 hours, 3 hours, 4 hours, and disabled, and the corresponding indicator(s) will light up (see table below). Five seconds after using the scheduled turn-off function, the indicator(s) resume to indicate the corresponding status of the current speed.

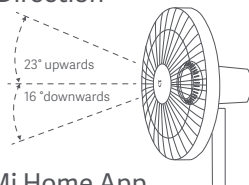
Scheduled	Disabled	1 hour	2 hours	3 hours	4 hours
Indicator	● ● ● ●	★ ● ● ●	★ ★ ● ●	★ ★ ★ ●	★ ★ ★ ★

Note: ★ means the indicator is on; ● means the indicator is off.

Note: For more scheduled turn-off options (up to 8 hours), please go to the Mi Home/Xiaomi Home app.

Adjust the Airflow Direction

Gently lift or push down the fan's head or fan grille to adjust the airflow upwards or downwards.



Connect with the Mi Home App

This product works with Mi Home/Xiaomi Home app*. Control your device with Mi Home/Xiaomi Home app.



Scan the QR code to download and install the app. You will be directed to the connection setup page if the app is installed already. Or search "Mi Home/Xiaomi Home" in the app store to download and install it. Open Mi Home/Xiaomi Home app, tap "+" on the upper right, and then follow prompts to add your device.

* The app is referred to as Xiaomi Home app in Europe (except for Russia). The name of the app displayed on your device should be taken as the default.

Note: The version of the app might have been updated, please follow the instructions based on the current app version.



Connecting to Wi-Fi

Simultaneously press and hold the buttons  and . Once you hear a long beep, the fan is awaiting a connection, then you can pair it with a device via the app.

How to Use

Wi-Fi Status & Indicator Description

Wi-Fi Status	Awaiting Connection	Connecting	Connected	Fail to Connect
Indicator	Blinking orange	Blinking blue	Blue	Orange

Resetting Wi-Fi Connection

Simultaneously press and hold the buttons (⏻) and (🔌). Once you hear a long beep, the Wi-Fi connection has been reset successfully and then the fan is awaiting a connection. The Wi-Fi connection needs to be reset on the circumstances listed below:

- The Mi account that the fan is paired with has been changed.
- The router that the fan is connected to has been changed.
- The account or password of the router that the fan is connected to has been changed.
- The Mi Home/Xiaomi Home app is unable to control the fan.

Enabling/Disabling Wi-Fi Connection

Simultaneously press the buttons (⏻) and (🔌) when the fan is working, then the Wi-Fi connection is disabled and the fan is turned off.

When the fan is turned on, the Wi-Fi connection is enabled automatically.

Child Lock Function

To disable the function of child lock, go to the page of Mi Smart Standing Fan 2 in the Mi Home/Xiaomi Home app, or simultaneously press and hold the buttons (🔌) and (⏻) until you hear a long beep.

Note: Resetting the Wi-Fi connection or unplugging and plugging in the fan again can also disable this function.

Care & Maintenance

Washable Parts

The parts listed below can be cleaned with a soft cloth or sponge using water or neutral detergent.



11

Front Grille



12

Fan Blade Assembly



13

Rear Grille



6

Rear Grille Knob

⚠ Note: Stop and unplug the fan, then disassemble it and clean its parts. After cleaning make sure all parts are completely dry before installing them and using the fan again. Avoid direct sunlight.

Not Washable Parts

The parts listed below can be wiped clean with a soft, dry cloth.



5

Fan Blade Assembly Knob



4

Base



3

Lower Stand



1

Motor & Upper Stand

⚠ Note: Do not rinse the parts listed above with water.

Do not use thinner, gasoline, detergent or alkaline detergent to clean any parts.

Troubleshooting

Fault	Possible Cause	Solution
The fan doesn't work	The fan is not connected to the power.	Connect the fan to an electrical outlet that meets the fan's requirements.
	The power cord is not properly connected to the power port.	Make sure the power cord is plugged in properly.
	The stand does not properly connect to the fan base.	Install the fan base with the stand correctly.
	Child lock is enabled.	Disable the child lock function.
Unable to connect to Wi-Fi	The Wi-Fi connection is 5 GHz.	Connect to a 2.4 GHz Wi-Fi network.
	The fan has been offline for more than half an hour.	Reset the Wi-Fi connection.
Fan blades are stuck	Fan blades are stuck by a foreign object.	Unplug the fan and remove the foreign object.
The oscillation function does not work.	The fan is under the auto-oscillation state.	Wait for the auto-oscillation completes. It will last for 14 seconds at most.

Specifications

Name	Mi Smart Standing Fan 2	Rated Voltage	100-240 V~	Power Cord Length	1.5 m
Model	BPLDS02DM	Rated Frequency	50/60 Hz	Wireless Connectivity	Wi-Fi IEEE 802.11 b/g/n 2.4 GHz
Type	Standing Fan	Rated Power	15 W		
Color	White	Item Dimensions	343 × 330 × 1000 mm		
Net Weight	3 kg	Noise Emission	≤58 dB(A)		
*Radio frequency and radio transmission power					
RF Specification		Operation Frequency		Maximum Output Power	
2.4 G Wi-Fi		2412-2472 MHz		<20 dBm	

Product Information Requirements	Test data
Maximum fan flow rate (F)	23.88 m³/min
Fan power input (P)	13.1 W
Service value (SV)	1.82 (m³/min)/W
Maximum air velocity(c)	3.56 meters/sec
Measurement standard for service value	EN IEC 60879:2019
Standby power consumption (PSB)	0.247 W
Fan sound power level (LWA)	57.1 dB(A)
Seasonal electricity consumption (Q)	4.469 kWh/a
Contact details for obtaining more information	Zhejiang Xingyue Electric Equipment Co., Ltd. South Side, 24th Floor, Jinpin Building, Headquarters Center, Yongkang City, Zhejiang Province, China

Regulatory Compliance Information



Hereby, Zhejiang Xingyue Electric Equipment Co., Ltd. declares that the radio equipment type BPLDS02DM is in compliance with Directive 2014/53/EU. The full text of the EU declaration of conformity is available at the following internet address: <http://www.mi.com/global/service/support/declaration.html>



All products bearing this symbol are waste electrical and electronic equipment (WEEE as in directive 2012/19/EU) which should not be mixed with unsorted household waste. Instead, you should protect human health and the environment by handing over your waste equipment to a designated collection point for the recycling of waste electrical and electronic equipment, appointed by the government or local authorities. Correct disposal and recycling will help prevent potential negative consequences to the environment and human health. Please contact the installer or local authorities for more information about the location as well as terms and conditions of such collection points.

For detailed e-manual, please go to www.mi.com/global/service/userguide