

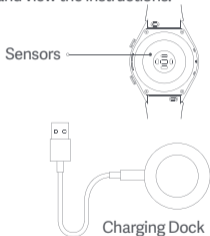
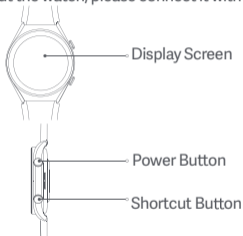
XIAOMI WATCH S1 User Manual .01



Product Overview

Read this manual carefully before use, and retain it for future reference. For more detailed information about the watch, please connect it with the app and view the instructions.

Watch



Note: Illustrations of product, accessories, and user interface in the user manual are for reference purposes only. Actual product and functions may vary due to product enhancements.

How to Connect

Download and install the app to better manage your watch, and log in to your Xiaomi account for more services. Note: The version of the app might have been updated, please follow the instructions based on the current app version.

1. Press and hold the function button to turn on the watch. Scan the QR code displayed on the watch with your phone, then download and install the app. You can also download and install the app from app stores.
2. Open the app, then log in your Xiaomi account. Select Add device and follow the instructions to add your watch.



Scan the QR code to download the app

Pairing

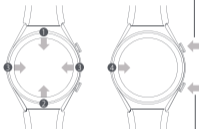
When an identical pairing code is displayed on both the phone and the watch, tap Pair to complete the pairing.

Notes:

- During pairing, make sure the Bluetooth is enabled on your phone and the watch is well connected with your phone.
- If the pairing code appears on the watch but not on the phone, please check whether there is a pairing request in the notifications of the phone.
- If the watch cannot be found while adding it to the app, or cannot connect with your phone during use, please press and hold the function button of the watch for approximately 3 seconds to restore it to factory settings, then try again.

How to Use

- 1 View notifications: Swipe down from the top on the home screen
- 2 Open control panel: Swipe up from the bottom on the home screen
- 3 Switch widget: Swipe left or right when on the home screen page
- 4 Go back: Swipe from the left edge to the right when on other screen pages



Power Button

- Press and hold for about 3 seconds: Turn on the watch. When the watch is on, the screen will show the options to turn off, restart and restore to the factory settings.
- Press and hold for about 15 seconds: Force restart.
- Press when on the home screen: Enter the function list.
- Press when on other pages: Go back to the home screen.

Shortcut Button

- Press when on the home screen: Enter the shortcut function (workout list by default).

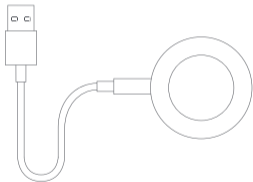
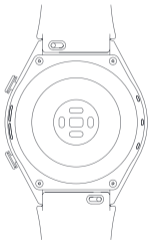
GPS & A-GPS

The watch supports the Global Position System (GPS) tracking. When you do outdoor exercises like running, the GPS will automatically start working and notify you when the positioning is successful, and quit tracking once you stop exercises. The open field outdoor is the best place for the GPS tracking; whereas when you are in a dense crowd, raising your arm up can better help GPS to the positioning. It is recommended to start your workout only when the GPS starts working.

The watch has an Assisted GPS (A-GPS) feature which can accelerate GPS positioning via the data directly from the GPS satellites. Make sure your watch is connected with the phone via the Bluetooth, the data can be automatically synchronized from app to your watch, and the A-GPS data automatically updated as well. In case the data has not been synchronized for seven consecutive days, the A-GPS data will expire. If so, the positioning information will need to be re-acquired. You can go to the page of outdoor exercises on your watch to update the positioning information.

Charging

Recharge your band immediately when the battery level is low.



Safety Precautions

- For daily use, comfortably tighten the watch around your wrist about one-finger width away from your wrist bone. Adjust the strap to ensure the heart rate sensor can collect data normally.
- When using the watch to measure your heart rate, please hold your wrist still.
- The watch has a water resistance rating of 5ATM (50 meters in depth). It can be worn in the swimming pool, while swimming near the shore, or during other shallow-water activities. However, It cannot be used in hot showers, sauna, or diving. Furthermore, remember to avoid the watch being directly impacted by swift currents during water sports. The water-resistant function is not permanent and may decline over time.
- The touchscreen of the watch does not support underwater operations. When the watch comes into contact with water, use a soft cloth to wipe away excess water from its surface before use.
- During daily use, avoid wearing the watch too tightly. Keep its contact area dry and regularly clean the strap with water. Immediately stop using the watch and seek medical assistance if the contact area on your skin shows signs of redness or swelling.
- The product information is listed on the back case of the watch for your reference.
- Please use the included charging dock to charge the watch. Only use the power adapters that comply with the local safety standards or certified and supplied by qualified manufacturers.

-
- Keep the power adapter, charging dock, and watch in a dry environment while charging. Do not touch the power adapter or charging dock with wet hands. Do not expose the power adapter, charging dock, and watch to rain or other liquids.
 - The operating temperature of the watch is 0°C to 45°C. If the ambient temperature is too high or too low, the watch may malfunction.
 - The watch has a built-in battery. To avoid damage to the battery or the watch, do not disassemble and replace the battery by yourself. Only the authorized service providers can replace the battery; otherwise, it will cause potential dangers even personal injuries if a wrong type of battery is used.
 - Do not disassemble, strike, crush or throw the watch into a fire. Stop using the battery immediately if there is any swelling or fluid leakage.
 - Never throw the watch or its battery into a fire so as to avoid an explosion.
 - This watch is not a medical device, any data or information provided by the watch should not be used as a basis for diagnosis, treatment, and prevention of diseases.
 - The watch and its accessories may contain small parts. To avoid choking or other hazards or damages caused by the children, keep the watch out of the reach of children.
 - The watch is not a toy. Keep it out of reach of children.

-
- If the watch will not be used for an extended period, turn it off after fully charging and then store it in a cool and dry place. Recharge the watch at least once every 3 months.
 - Do not put the battery in trash that is disposed of in landfills. When disposing of the battery, comply with local laws or regulations.
 - Leaving a battery in an extremely high temperature surrounding environment that can result in an explosion or the leakage of flammable liquid or gas.
 - A battery subjected to extremely low air pressure that may result in an explosion or the leakage of flammable liquid or gas.
 - Keep the product's indicator away from the eyes of children and animals while the product is in use.
 - Please use the original charging cable in accordance with the specifications described in the manual. The charging cable cannot be used to charge other products, nor can it be used with chargers that exceed the input specifications.
 - Replacement of a battery with an incorrect type that can defeat a safeguard (such as catching fire, explosion, leakage of corrosive electrolyte etc).

Specifications

Product: Smart Watch

Name: Xiaomi Watch S1

Model: M2112W1

Wireless Connectivity: **Bluetooth® 5.2**, Wi-Fi IEEE
802.11b/g/n 2.4 GHz

Battery Capacity: 470 mAh

Water Resistance: 5 ATM

Transmitting Frequency of GPS/GLONASS/Galileo/

BeiDou: 1559–1610 MHz

Watch Net Weight: 69 g (Including strap)

Strap Materials: Calfskin leather/Fluororubber

Buckle Material: SUS316L

Battery Type: Lithium-ion polymer battery

Input Current: 1 A

Input Voltage: 5 V ---

--- The symbol indicates DC voltage

Wireless Charging Operating Frequency:
119.2–145.1 KHz

Wi-Fi Operation Frequency: 2400–2483.5 MHz

Wi-Fi Maximum Output Power: <20 dBm

Bluetooth Operation Frequency: 2400–2483.5 MHz

Bluetooth Maximum Output Power: <13 dBm

Maximum Output Power: 28.07 dBuA/m@10m

NFC Operation Frequency: 13.56 MHz

Operating Temperature: 0°C to 45°C

Compatible with: This watch only supports certain
Android or iOS systems. For detailed information,
please check this watch's product page on
www.mi.com or consult sales/customer service staff
before purchasing.

This equipment has been tested and meets applicable limits for radio frequency (RF) exposure. Specific Absorption Rate (SAR) refers to the rate at which the body absorbs RF energy. SAR limits depend on whether this equipment is used against the head or on the wrist. The SAR limit is 2.0 watts per kilogram averaged over 10 grams of tissue for use against the head and 4.0 watts per kilogram averaged over 10 grams of tissue for use on the wrist. During testing, this equipment radios are set to their highest transmission levels and placed in positions that simulate use next to the mouth, with 5 mm separation, and on the wrist, with no separation. When placing this equipment near your mouth, keep at least 5 mm of separation to ensure exposure levels remain at or below the as-tested levels.

After testing, the highest SAR values are as follows:
Next to the mouth: 0.147 W/kg

Wrist: 0.222 W/kg

The Bluetooth® word mark and logos are registered trademarks owned by Bluetooth SIG, Inc. and any use of such marks by Xiaomi Inc. is under license. Other trademarks and trade names are those of their respective owners.



Hereby, Xiaomi Communications Co., Ltd. declares that the radio equipment type M2112W1 in compliance with Radio Equipment Regulations 2017. The full text of the UKCA declaration of conformity is available at the following internet address: <https://www.mi.com/uk/service/support/declaration.html>

Regulatory Compliance Information



All products bearing this symbol are waste electrical and electronic equipment which should not be mixed with unsorted household waste. Instead, you should protect human health and the environment by handing over your waste equipment to a designated collection point for the recycling of waste electrical and electronic equipment, appointed by the government or local authorities. Correct disposal and recycling will help prevent potential negative consequences to the environment and human health. Please contact the installer or local authorities for more information about the location as well as terms and conditions of such collection points.

EU Declaration of Conformity



Hereby, Xiaomi Communications Co., Ltd. declares that the radio equipment type M2112W1 is in compliance with Directive 2014/53/EU. The full text of the EU declaration of conformity is available at the following internet address:

<http://www.mi.com/global/service/support/declaration.html>

For regulatory information, product certification, and compliance logos related to the Xiaomi Watch S1, please go to Settings > About Watch > Regulatory.

WARRANTY NOTICE

As a Xiaomi consumer, you benefit under certain conditions from additional warranties. Xiaomi offers specific consumer warranty benefits which are in addition to, and not instead of, any legal warranties provided by your national consumer law. The duration and conditions related to the legal warranties are provided by respective local laws. For more information about the consumer warranty benefits, please refer to Xiaomi's official website <https://www.mi.com/en/service/warranty/>. Except as prohibited by laws or otherwise promised by Xiaomi, the after-sales services shall be limited to the country or region of the original purchase. Under the consumer warranty, to the fullest extent permitted by law, Xiaomi will, at its discretion, repair, replace or refund your product. Normal wear and tear, force majeure, abuse or damage caused by the user's negligence or fault are not warranted. The contact person for the after-sale service may be any person in Xiaomi's authorized service network, Xiaomi's authorized distributors or the final vendor who sold the products to you. If in doubt please contact the relevant person as Xiaomi may identify.

The present warranties do not apply in Hong Kong and Taiwan.

Products which were not duly imported and/or were not duly manufactured by Xiaomi and/or were not duly acquired from Xiaomi or a Xiaomi's official seller are not covered by the present warranties. As per applicable law you may benefit from warranties from the non-official retailer who sold the product.

Therefore, Xiaomi invites you to contact the retailer from whom you purchased the product.

For the information not covered in this quick start guide, please go to www.mi.com

For detailed information on the above functions, please scan the QR code or connect the watch with the app to view the instructions.

