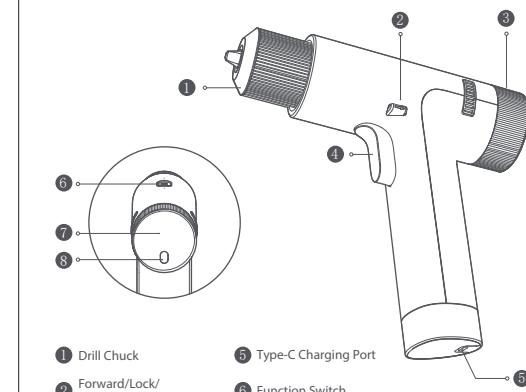


Read this manual carefully before use, and retain it for future reference.

01 Product Overview

Thank you for choosing the Xiaomi 120 Max Brushless Cordless Drill. This drill is for tightening and loosening screws, as well as drilling holes in wood, metal, plastic, and bricks. However, it is not suitable for drilling holes in extremely hard materials, such as concrete and stone. Please make sure to select the appropriate drill bit when using the drill.



- 1 Drill Chuck
- 2 Forward Lock/Reverse Button
- 3 Torque/Speed Adjustment Knob
- 4 Trigger
- 5 Type-C Charging Port
- 6 Function Switch
- 7 Display
- 8 Mode Button

02 How to Use

Installing Drive Bits/Drill Bits

- Turn the drill chuck in the direction shown by arrow 1) to loosen it, until the driver bit/drill bit can be inserted. Then turn in the opposite direction, as shown by arrow 2), to tighten the chuck and secure the driver bit/drill bit in place.
- When installing a bit, make sure that the three jaws in the drill chuck are clamping the bit.

Trigger

- Pressure sensitive multiple speed trigger.
- The more you press it, the faster it goes.

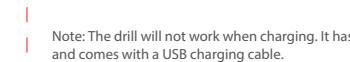
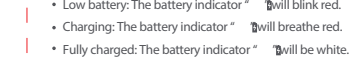
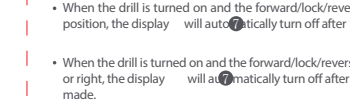
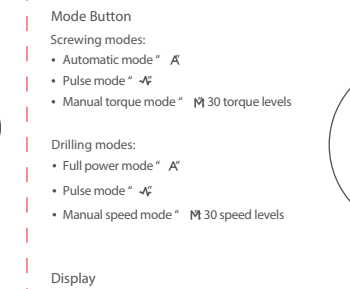
Forward/Lock/Reverse Button

- Use the forward/lock/reverse button to change the direction of rotation or lock the trigger.
- Forward: When drilling or tightening screws, push the forward/lock/reverse button to the far left, and the drill will start running.
- Reverse: When loosening or unscrewing screws, push the forward/lock/reverse button to the far right, and the icon will light up on the display.
- Locking the trigger: Move the forward/lock/reverse button to the middle, and neither the icon nor the trigger will light up on the screen.

Function Switch

- Screwing: Push the function switch and the drill will start running at a low speed suitable for tightening and loosening screws.
- Drilling: Push the function switch and the drill bit icon will light up on the screen.

Note: The drill will not work when charging. It has a Type-C charging port, and comes with a USB charging cable.



Mode Button

Screwing mode:
Automatic mode "A"
Pulse mode "P"
Manual torque mode "M" 30 torque levels

Drilling mode:

Full power mode "G"
Pulse mode "G"
Manual speed mode "M" 30 speed levels

Display

When the drill is turned on and the forward/lock/reverse button is pushed to the middle position, the display will automatically turn off after 10 seconds. If no operation is made:
Forward: When drilling or tightening screws, push the forward/lock/reverse button to the far left, and the icon will light up on the display.
Reverse: When loosening or unscrewing screws, push the forward/lock/reverse button to the far right, and the icon will light up on the display.
Locking the trigger: Move the forward/lock/reverse button to the middle, and neither the icon nor the trigger will light up on the screen.

Charging

Low battery: The battery indicator will blink red.
Charging: The battery indicator will blink in red.
Fully charged: The battery indicator will be white.

Note: The drill will not work when charging. It has a Type-C charging port, and comes with a USB charging cable.

03 Tips for Beginners

Choosing the Mode

- Manual torque/speed mode "M": Recommended to start at a lower torque/speed level (1-5). If the torque/speed isn't high enough, then it can be gradually increased.
- Automatic mode "A": You don't need to adjust the torque, as the drill will automatically stop when it encounters a certain level of resistance (e.g. when a screw has been fully tightened).
- Pulse mode "P": The drill will run intermittently at a lower speed, which is suitable for beginners getting used to the drill, as it avoids slipping of the drill bit on the surface you're drilling or screws stripped by the driver bit.

Drilling Tips

- Pre-drilling: To avoid worky drilling, pre-drill holes by using the drill at a lower speed like level 1-5 or pulse mode.
- Safety: With a high torque, a strong reacting force may be generated when the drill is used to tighten or loosen screws. Therefore, please make sure to hold the drill firmly with both hands.

Screwing

- Manual torque mode "M": You can manually adjust the torque by twisting the torque/speed adjustment knob to the back of the drill as the case may be. Levels 1-5 are recommended for drilling holes. If the device doesn't run fast enough, gradually increase the level and it will speed up. Levels 1-30: The drill will gradually speed up with the increase in the level.
- Full power mode "G": The mode delivers the highest output, equivalent to level 30 in the manual speed mode "M". Pulse mode "G": This mode is suitable for surfaces of smooth glass, ceramic tiles, etc., and it is helpful in marking and drilling holes, and avoid slipping (pre-drilling). CAUTION: This drill couldn't work both manually and automatically and you cannot use it to manually tighten screws. Do not use the drill inertia to lock the chuck.

CAUTION:

When using levels 16-30, the drill will output a high torque. Thus, please make sure to hold it with both hands to prevent any excessive reacting force that could damage your wrists and ensure safe usage.

Automatic mode "A":

You don't need to adjust the torque, as it will adjust automatically to meet your requirements, and it is suitable for use in unfamiliar scenarios.

Beginners: Automatic torque adjustment makes the drill easy to control. It is recommended to use this mode when there are preset holes. The drill may stop rotating in automatic mode in the case of uneven wood.

Pulse mode "P":

Enhanced safety: Low speed and intermittent rotation. Relatively easy to control and recommended for beginners. Reduces slipping of and damage to screws and driver bits. Soft materials: Reduces damage to soft materials.

Drilling

Manual speed mode "M":

You can manually adjust the speed by twisting the torque/speed adjustment knob to the back of the drill as the case may be.

- Levels 1-5: are recommended for drilling holes. If the device doesn't run fast enough, gradually increase the level and it will speed up.
- Levels 1-30: The drill will gradually speed up with the increase in the level.

WARNING:

Read all safety warnings, instructions, illustrations and specifications provided with this power tool. Failure to follow all instructions listed below may result in electric shock, fire and/or serious injury. Save all warnings and instructions for future reference. The term "power tool" in the warnings refers to your mains-operated (corded) power tool or battery-operated (cordless) power tool.

Work Area Safety

- Keep work area clean and well lit. Cluttered or dark areas invite accidents.
- Do not operate power tools in explosive atmospheres, such as in the presence of flammable liquids, gases or dust. Power tools create sparks which may ignite the dust or fumes.
- Keep children and bystanders away while operating a power tool. Distractors can cause you to lose control.

Electrical Safety

- Power tool plugs must match the outlet. Never modify the plug in any way. Do not use any adapter plugs with earthed (grounded) power tools. Unmodified plugs and matching outlets will reduce risk of electric shock.
- Avoid body contact with earthed or grounded surfaces, such as pipes, radiators, ranges and refrigerators. There is an increased risk of electric shock if your body is earthed or grounded.
- Do not expose power tools to rain or wet conditions. Water entering a power tool will increase the risk of electric shock.
- Do not abuse the cord. Never use the cord for carrying, pulling or unplugging the power tool. Keep cord away from heat, oil, sharp edges or moving parts. Damaged or entangled cords increase the risk of electric shock.
- When operating a power tool outdoors, use an extension cord suitable for outdoor use. Use of a cord suitable for outdoor use reduces the risk of electric shock.
- Prepare a power tool in a damp location is unavoidable, use a residual current device (RCD) protected supply. Use of an RCD reduces the risk of electric shock.

04 General Power Tool Safety Warnings

Personal Safety

- Stay alert, watch what you are doing and use common sense when operating a power tool. Do not use a power tool while you are tired or under the influence of drugs, alcohol or medication. A moment of inattention while operating power tools may result in serious personal injury.
- Use personal protective equipment. Always wear eye protection. Protective equipment such as a dust mask, non-skid safety shoes, hard hat or hearing protection used for appropriate conditions will reduce personal injury.
- Prevent unintentional starting. Ensure the switch is in the off-position before connecting to power source and/or battery pack, picking up or carrying the tool. Carrying power tools with your finger on the switch or engaging power tools that have the switch on invites accidents.
- Remove any adjusting key or wrench before turning the power tool on. A wrench or a key left attached to a rotating part of the power tool may result in personal injury. Do not overreach. Keep proper footing and balance at all times. This enables better control of the power tool in unexpected situations. Dress properly. Do not wear loose clothing or jewellery. Keep your hair and clothing away from moving parts. Loose clothes, jewellery or long hair can be caught in moving parts.
- Ensure these are connected and properly used. Use of dust collection can reduce dust-related hazards.
- Do not let familiarity gained from frequent use of tools allow you to become complacent and ignore tool safety principles. A careless action can cause severe injury within a fraction of a second.

Power Tool Use and Care

- Do not force the power tool. Use the correct power tool for your application. The correct power tool will do the job better and safer at the rate for which it was designed.
- Do not use the power tool if the switch does not turn it on and off. Any power tool that cannot be controlled with the switch is dangerous and must be repaired.
- Disconnect the plug from the power source and/or remove the battery pack, if detachable, from the power tool before making any adjustments, changing accessories, or storing power tools. Such preventive safety measures reduce the risk of starting the power tool accidentally.
- Store idle power tools out of the reach of children and do not allow persons unfamiliar with the power tool or these instructions to operate the power tool. Power tools are dangerous in the hands of untrained users. Maintain power tools and accessories. Check for misalignment or binding of moving parts, breakage of parts and any other condition that may affect the power tool's operation. If damaged, have the power tool repaired before use. Many accidents are caused by poorly maintained power tools.
- Keep cutting tools sharp and clean. Properly maintained cutting tools with sharp matching outlets will reduce risk of electric shock.
- cutting edges are less likely to bind and are easier to control.
- Use the power tool, accessories and tool bits etc., in accordance with these instructions, taking into account the working conditions and the work to be performed. Use of the power tool for operations different from those intended could result in a hazardous situation.
- Keep handles and grasping surfaces dry, clean and free from oil and grease.
- Slippery handles and grasping surfaces do not allow for safe handling and control of the tool in unexpected situations.

Service

- Have your power tool serviced by a qualified repair person using only identical replacement parts. This will ensure that the safety of the power tool is maintained. Never service damaged battery packs. Service of battery packs should only be performed by the manufacturer or authorized service providers.

Battery Tool Use and Care

- Recharge only with the charger specified by the manufacturer. A charger that is suitable for one type of battery pack may create a risk of fire when used with another battery pack.
- Use power tools only with specifically designated battery packs. Use of any other battery packs may create a risk of injury and fire.
- When battery pack is not in use, keep it away from other metal objects, like paper clips, coins, keys, nails, screws or other small metal objects, that can make a connection from one terminal to another. Shorting the battery terminals together may cause burns or a fire.
- Under abusive conditions, liquid may be ejected from the battery; avoid contact. If contact accidentally occurs, flush with water. If liquid contacts eyes, additionally seek medical help. Liquid ejected from the battery may cause irritation or burns.
- Do not use a battery pack or tool that is damaged or modified. Damaged or modified batteries may exhibit unpredictable behavior resulting in fire, explosion or risk of injury.
- Do not expose a battery pack or tool to fire or excessive temperature.
- Exposure to fire or temperature above 130°C may cause explosion.
- Follow all charging instructions and do not charge the battery pack or tool outside the temperature range specified in the instructions. Charging improperly or at temperatures outside the specified range may damage the battery and increase the risk of fire.

Safety Instructions for Drill/Driver

- Hold the power tool securely. When tightening and loosening screws be prepared for temporarily high torque reactions.
- In case of damage and improper use of the battery, vapours may be emitted. The battery can set alight or explode. Ensure the area is well ventilated and seek medical attention should you experience any adverse effects. The vapours may irritate the respiratory system.
- Do not open the battery. There is a risk of short-circuiting.
- The battery can be damaged by pointed objects such as nails or screwdrivers or by force applied externally. An internal short circuit may occur, causing the battery to burn, smoke, explode or overheat.
- Only use the battery with products from the manufacturer. This is the only way in which you can protect the battery against dangerous overheat.
- Protect the battery against heat, e.g. against continuous intense sunlight, fire, dirt, water and moisture. There is a risk of explosion and short-circuiting.

Additional Safety Information

- Secure the workpiece. A workpiece clamped with clamping devices or in a vice is held more secure than by hand.
- Always wait until the power tool has come to a complete stop before placing it down. The application tool can jam and cause you to lose control of the power tool.
- Switch the power tool off immediately if the application tool becomes blocked. Be prepared for high torque reactions which cause kickback. The application tool becomes blocked when it becomes jammed in the workpiece or when the power tool becomes overloaded.
- Use suitable detectors to determine if there are hidden supply lines or contact the local utility company for assistance. Contact with electric cables can cause fire and electrical shock. Damaging gas lines can lead to explosion. Breaking water pipes causes property damage.

Troubleshooting

Error	Cause	Solution
Drill stops rotating during use with displayed	After unused for a long time, the battery gets too hot.	Leave the device cooling down to room temperature.
Drill stops rotating during use with displayed	The battery is depleted.	Charge the battery.
Unable to install drill bit	The drill bit is wrong size for the chuck.	Use a drill bit that comes with the drill or use one that is 10 mm in diameter.
Drill doesn't start after pressing the switch trigger	The trigger is locked as the forward/lock/reverse button to the left or right (when looking at the drill from the back towards the chuck).	Push the forward/lock/reverse button to the left or right (when looking at the drill from the back towards the chuck).
Unable to charge the battery	The USB cable isn't plugged in or the included charging cable isn't being used.	Check whether the battery indicator is on and whether use the charging cable that comes with the drill.

05 Specifications

Model: MWSZNY20ZDZ1QW
Item Dimensions: 185.5 x 179 x 51.5 mm
Max. Torque: 30 Nm
Rated Input: 5 V ~ 4 A, 9 V ~ 4.6 A
Rated Voltage: 12 V ~
Battery Capacity: 2000 mAh
Battery Type: Lithium-ion battery pack
Charging Time: 120-160 min
Net Weight: Approx. 870 g
Unloaded Rotational Speed: 0-1400/min (drilling mode)
0-370/min (screwing mode)
Bit Extension: 60 mm
Battery Charger Input: 100-240 V ~, 50/60 Hz, 0.6 A
Battery Charger Output: 5.0 V ~ Φ A 1.0 W, 9.0 V ~ 2.85 A 20.0 W
 Only use the genuine battery charger (model MYD-11-EP) to charge.

Declaration of the noise emission values according to EN 62841 (considered uncertainty: 1 dB(A))
Sound pressure level: 70.7 dB(A)
Sound power level: 81.7 dB(A)
Declaration of the vibration emission according to EN 62841 (considered uncertainty: 1.5 m/s³/0.96 m/s³)

Note:
 • Metal drill bits are black (only suitable for drilling holes in metal and wood drill bits are silver (only suitable for drilling holes in plastic and wood)). As driver bits/drill bits are consumables, and H14 and H2 are the most frequently used, two of each have been supplied.
 • Unloaded rotational speed has a tolerance of \pm 10%. Due to differences in measuring equipment, the maximum torque error is \pm 5 N·m.

Information:
 The declared vibration total value(s) and the declared noise emission value(s) have been measured in accordance with a standard test method and may be used for comparing one tool with another.
 The declared vibration total value(s) and the declared noise emission value(s) may also be used in a preliminary assessment of exposure.

Warning:
 The vibration and noise emissions during actual use of the power tool can differ from the declared values depending on the ways in which the tool is used especially what kind of exposure in the actual conditions of use (taking account of all parts of the operating cycle such as the times when the tool is switched off and when it is running idle in addition to the trigger time).

The battery is undetachable.

Manufactured by: Xiaomi Communications Co., Ltd.
 Manufacture by: Shanghai HOTO Technology Co., Ltd.
 (a Mi Ecosystem company)
 Address: Building 45, No. 50 Magashan Road, Shanghai, China
 For further information, please go to www.mi.com
 User Manual Version: V1.0